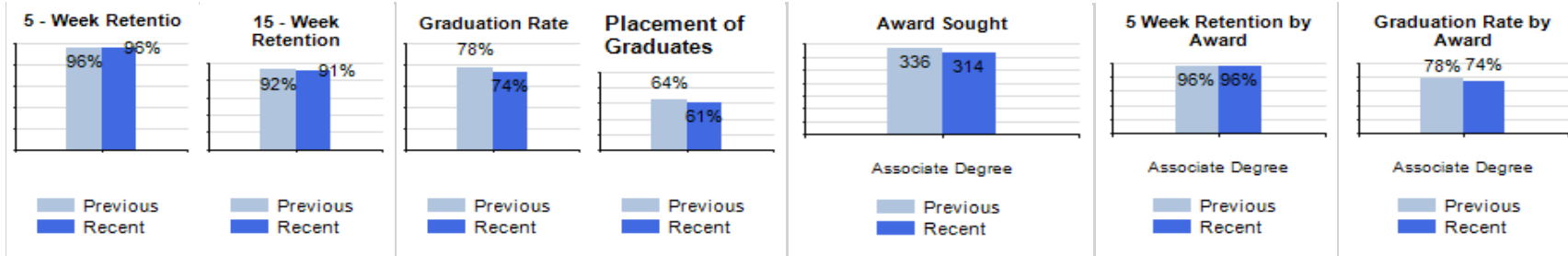


Longitudinal Program Data - Respiratory Therapy: Data by Campus

Date Range for Previous Program Data		Date Range for Recent Program Data	
From:	To:	From:	To:
9/4/2012	9/30/2013	11/4/2013	12/1/2014

Campus	Previous Data					Recent Data				
	Number of Students	5 - Week Retention	15 - Week Retention	Graduation Rate	Placement of Graduates	Number of Students	5 - Week Retention	15 - Week Retention	Graduation Rate	Placement of Graduates
Bakersfield	62	97%	89%	74%	67%	67	96%	90%	67%	62%
Ontario	82	98%	95%	79%	51%	79	97%	90%	77%	49%
Rancho Cordova	88	98%	97%	90%	81%	77	96%	95%	79%	70%
Temecula	37	89%	86%	68%	64%	30	97%	97%	73%	77%
Visalia	68	94%	88%	68%	52%	61	93%	87%	69%	55%
All	336	96%	92%	78%	64%	314	96%	91%	74%	61%
Associate Degree	336	96%	92%	78%	64%	314	96%	91%	74%	61%



GOALS:

Graduation Rate: $\geq 70\%$

Placement Rate: $\geq 70\%$

Attendance: $\geq 80\%$ of Students at 85% Attendance

- $< 85\%$ attendance is a student missing more than 3 out of 20 days of a 3-unit course. Does not include any distance education courses in calculation

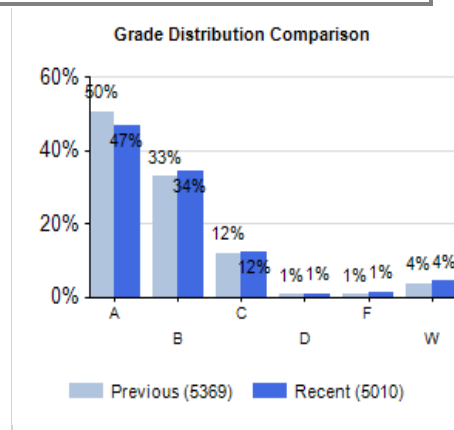
Course Completion: 90%

- Course Completion is the number of students receiving passing grade who started the course (includes withdraws as not completed)

Longitudinal Program Data - Respiratory Therapy: Data by Course

Date Range for Previous Program Review Data				Date Range for Recent Program Review Data			
From:		To:		From:		To:	
9/4/2012		9/30/2013		11/4/2013		12/1/2014	

Course Category	Previous Program Data					Recent Program Data				
	Course Code	Times Taught	# Student	% Attending > 85%	% Course Complete	Course Code	Times Taught	# Student	% Attending > 85%	% Course Complete
Core	PHAR21	20	293	99%	99%	PHAR21	17	273	99%	98%
	RT1	15	316	98%	96%	RT1	14	299	97%	93%
	RT10	15	333	98%	91%	RT10	16	319	96%	87%
	RT2	20	291	99%	94%	RT2	18	275	100%	95%
	RT20	21	296	96%	93%	RT20	19	281	98%	94%
	RT3	23	274	100%	96%	RT3	21	263	98%	93%
	RT30	23	272	99%	96%	RT30	21	266	95%	93%
	RT31	23	272	97%	96%	RT31	22	263	94%	94%
	RT4	21	265	98%	98%	RT4	21	246	98%	98%
	RT40	21	265	100%	99%	RT40	21	246	98%	98%
	RT41	21	264	100%	99%	RT41	22	252	96%	96%
	Total	223	336	98%	96%	Total	212	314	97%	94%
GE - Science	BIO24	17	274	95%	93%	BIO24	14	255	93%	91%
	BIO31	21	264	94%	91%	BIO31	19	237	94%	95%
	CHE3A	19	263	96%	90%	CHE3A	17	252	93%	88%
		Total	57	295	95%	92%	Total	50	274	94%
GE - Standard	ENG121	15	202	97%	97%	ENG121	14	186	96%	97%
	ENG122	19	190	96%	98%	ENG122	23	190	97%	98%
	MTH121	17	243	98%	95%	MTH121	18	205	97%	96%
	MTH122	22	230	97%	98%	MTH122	23	189	98%	99%
	PHIL1C	28	243	97%	99%	PHIL1C	28	225	94%	98%
	PSY1	28	144	96%	95%	PSY1	28	151	83%	89%
	SOC1	31	188	96%	97%	SOC1	33	187	76%	98%
	Total	160	324	97%	97%	Total	167	294	93%	97%
All Courses	Total	440	336	98%	96%	Total	429	314	96%	94%



GOALS:

Graduation Rate: **>=70%**

Placement Rate: **>=70%**

Attendance: **>=80% of Students at 85% Attendance**

- **<85% attendance is a student missing more than 3 out of 20 days of a 3-unit course. Does not include any distance education courses in calculation**

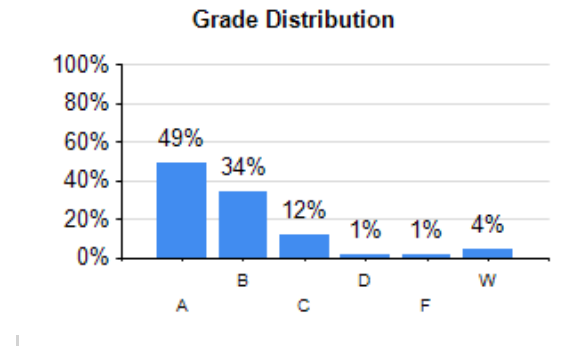
Course Completion: **90%**

- **Course Completion is the number of students receiving passing grade who started the course (includes withdraws as not completed)**

Current Program Data - Respiratory Therapy

Date Range of Current Program Measures	
From:	To:
6/9/2014	6/27/2016

Course Category	Course Code	Times Taught	# Students	% Attending > 85%	% Course Complete
Core	PHAR21	31	602	99%	96%
	RT1	22	427	98%	96%
	RT10	20	396	97%	92%
	RT10A	7	141	96%	93%
	RT10B	2	48	100%	100%
	RT2	25	463	100%	94%
	RT20	27	521	97%	94%
	RT3	26	474	99%	95%
	RT30	26	480	97%	94%
	RT31	26	474	96%	95%
	RT4	26	458	99%	98%
	RT40	26	457	98%	98%
	RT41	26	463	97%	97%
	Total	290	797	98%	95%
GE - Science	BIO24	27	433	94%	93%
	BIO31	25	410	94%	93%
	CHE3A	27	443	95%	91%
	Total	79	562	95%	93%
GE - Standard	ENG121	25	223	95%	96%
	ENG122	43	310	95%	98%
	MTH121	30	291	95%	95%
	MTH122	35	313	98%	99%
	PHIL1C	45	412	94%	99%
	PSY1	44	275	84%	92%
	SOC1	48	298	87%	97%
	Total	270	651	93%	97%
All Courses	Total	639	805	97%	95%



GOALS:
Attendance: 85% of Students at 85% Attendance
Course Completion: 90%

Respiratory Therapy Course by Course Review

Date Range for Course by Course Measures

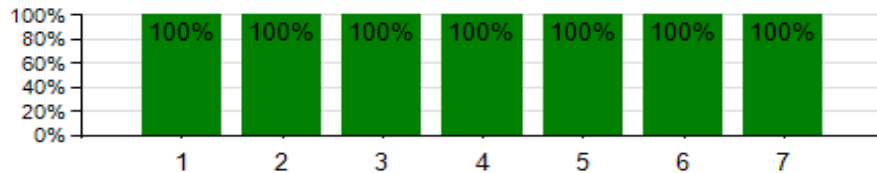
From:	To:
6/9/2014	6/27/2016

RT1: Clinical Practice - Rotation 1 (1 Units)

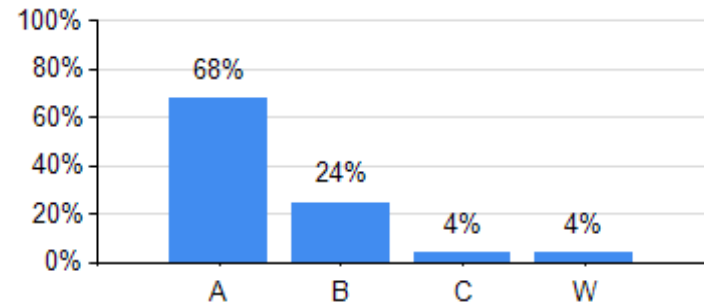
Course Learning Outcome Statements	# Students Assessed	# Assessments Delivered	% Mastery Rate	# Assessed with Rubric	# Assessed nonRubric
CLO-RT1-1: Maintain the required health screenings, background check report, and current vaccinations	255	255	100%	255	0
CLO-RT1-2: Explain the procedures for patient safety in case of an emergency	251	251	100%	251	0
CLO-RT1-3: Explain the policies and procedures listed in the SJVC clinical manual	263	263	100%	263	0
CLO-RT1-4: Follow HIPAA guidelines	254	254	100%	254	0
CLO-RT1-5: Perform Basic Life Support (BLS)	262	262	100%	262	0
CLO-RT1-6: Perform the required clinical competencies	263	263	100%	263	0
CLO-RT1-7: Properly fill out the clinical time sheet and other clinical documentation	251	251	100%	251	0

Course Code	# Times Taught	# Students	% Attending > =85%	Course Completion
RT1	22	427	98%	96%

CLO Mastery Rate



Grade Distribution



RT 1 Common Assessment Content

CLO(s)	Type	Threshold	NON-Question Assessment	Rubric Rows
3 & 6	Grade Item	Level 3 on a 4 point Rubric	[Mastery] Medical Gas Oximetry Rubric	Overall Score
2	Grade Item	Level 2 on a 2 point Rubric Meets Standard	[Mastery] RACE rubric	Overall Score
4	Grade Item	Level 2 on a 2 point Rubric Meets Standard	[Mastery] HIPAA rubric	Overall Score
5	Grade Item	Level 2 on a 2 point Rubric Meets Standard	[Mastery] Basic Life Support (BLS) rubric	Overall Score
1	Grade Item	Level 2 on a 2 point Rubric Meets Standard	[Mastery] Clinical Documentation rubric	Overall Score
1	Grade Item	Level 2 on a 2 point Rubric Meets Standard	[Mastery] Maintain required Health Screenings, background report, & vaccinations	Overall Score

CLOs
<ol style="list-style-type: none"> 1. Maintain the required health screenings, background check report, and current vaccinations. 2. Explain the procedures for patient safety in case of an emergency. 3. Explain the policies and procedures listed in the SJVC clinical manual. 4. Follow HIPAA guidelines. 5. Perform Basic Life Support (BLS). 6. Perform the required clinical competencies. 7. Properly fill out the clinical time sheet and other clinical documentation.

Respiratory Therapy Course by Course Review

Date Range for Course by Course Measures	
From:	To:
6/9/2014	6/27/2016

RT1: Clinical Practice - Rotation 1 (1 Units)

RT1 Student Response to Course Survey Questions

Question Text	Strongly Agree	Agree	Disagree	Strongly Disagree	NKO/NA	Question Rating**
Course assignments and activities are helping me learn the Student Learning Outcomes (SLOs).	190	124	13	2	7	3.45
Course assignments and activities are helping me achieve the Student Learning Outcomes (SLOs).	380	248	26	4	14	3.45
Course content is relevant to my lifelong learning or to my career.	506	156	8	2	0	3.74
Course policies and expectations are clear on the syllabus.	233	95	5	0	1	3.67
Course policies and expectations are outlined on the syllabus.	466	190	10	0	2	3.67
Course resources are adequate and available for my learning needs. (e.g. computers, textbooks, equipment, supplies, and tools.)	456	192	6	6	8	3.62
Question Text	Too much	Just right	Too little	Question Rating**		
The amount of content/material presented in this course is:	44	538	86	1.94		

Question Text	Excellent	Good	Fair	Poor	Question Rating**
Overall rating for this course.	428	174	52	16	2.51

Question Text	Yes	Somewhat	Question Rating**
I approached this course responsibly to maximize my learning. (e.g. I attended class every day, completed assignments on time, participated in class, adhered to classroom expectations, was in dress code, treated instructor and students with respect, etc.)	650	20	1.97

Question Text	Very High – I’ve learned all of them	High – I’ve learned most of them	Medium – I’ve learned some of them	Low – I’ve learned none of them	I wasn’t aware of the SLOs in the course	Question Rating**
My level of mastery of the Student Learning Outcomes (SLOs) in this course is:	258	344	58	2	6	3.27

GOAL

Question Rating: >=3.0

*Questions Rated on a 4 Point Likert Scale (4 = Strongly Agree to 1 = Strongly Disagree)

**Questions Rated on a 4 Point Likert Scale (4 = Excellent to 1 = Poor)