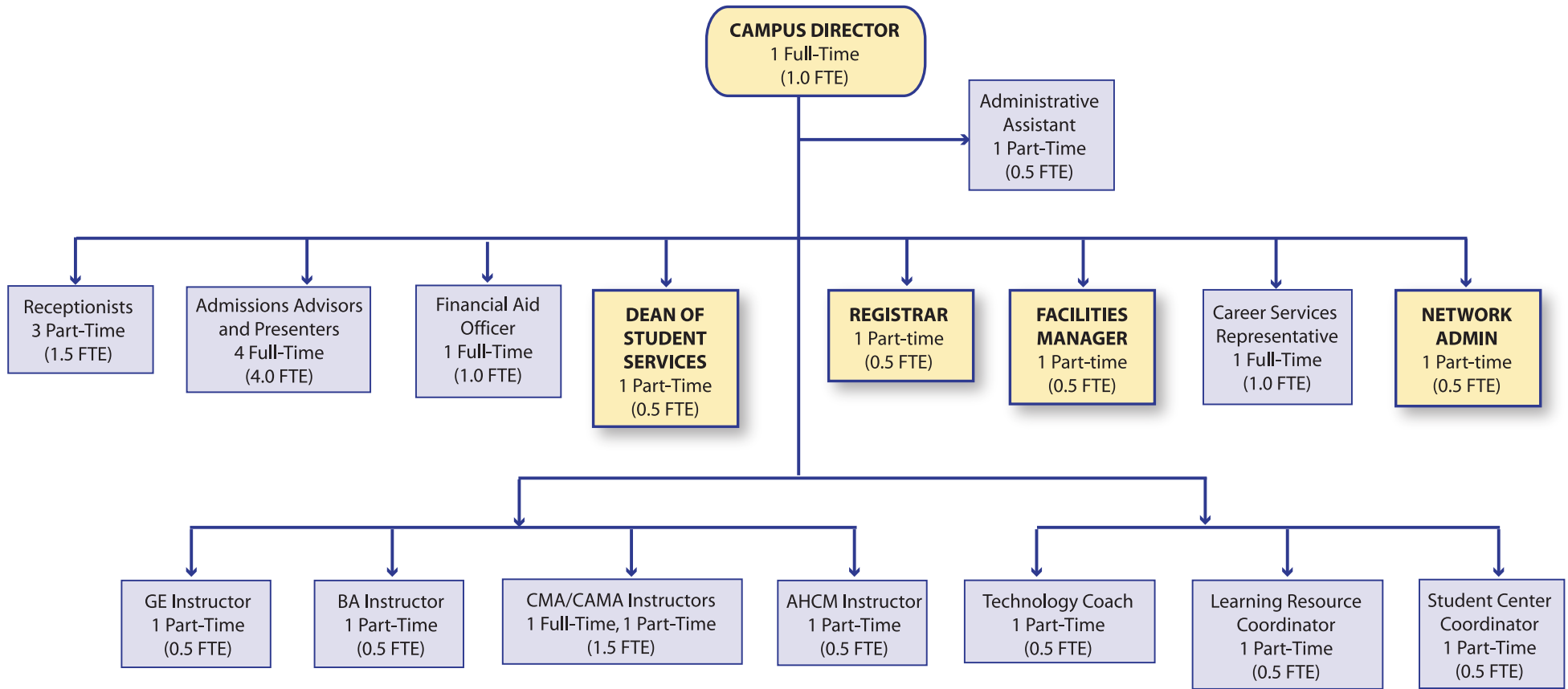


Lancaster Campus Organization Chart - Day One (Exhibit 11)



Please note that staffing is based on student enrollment projections. Both full and part time positions are required to accommodate the projected enrollments. The mixture of full and part time faculty is dependent upon the number of sessions offered and when they are scheduled (i.e., morning, afternoon, or evening session).

Some of the part-time positions reflected in this chart may be combined until student census reaches a level that requires full-time positions.

The following positions are likely to be combined:

- Administrative Assistant and Registrar
- Student Center Coordinator and Faculty position
- Facility Manager and Network Administrator
- Dean of Student Services and Technology Coach

Depending upon applicant credentials, the following positions may be combined:

- Learning Resource Coordinator and Faculty position