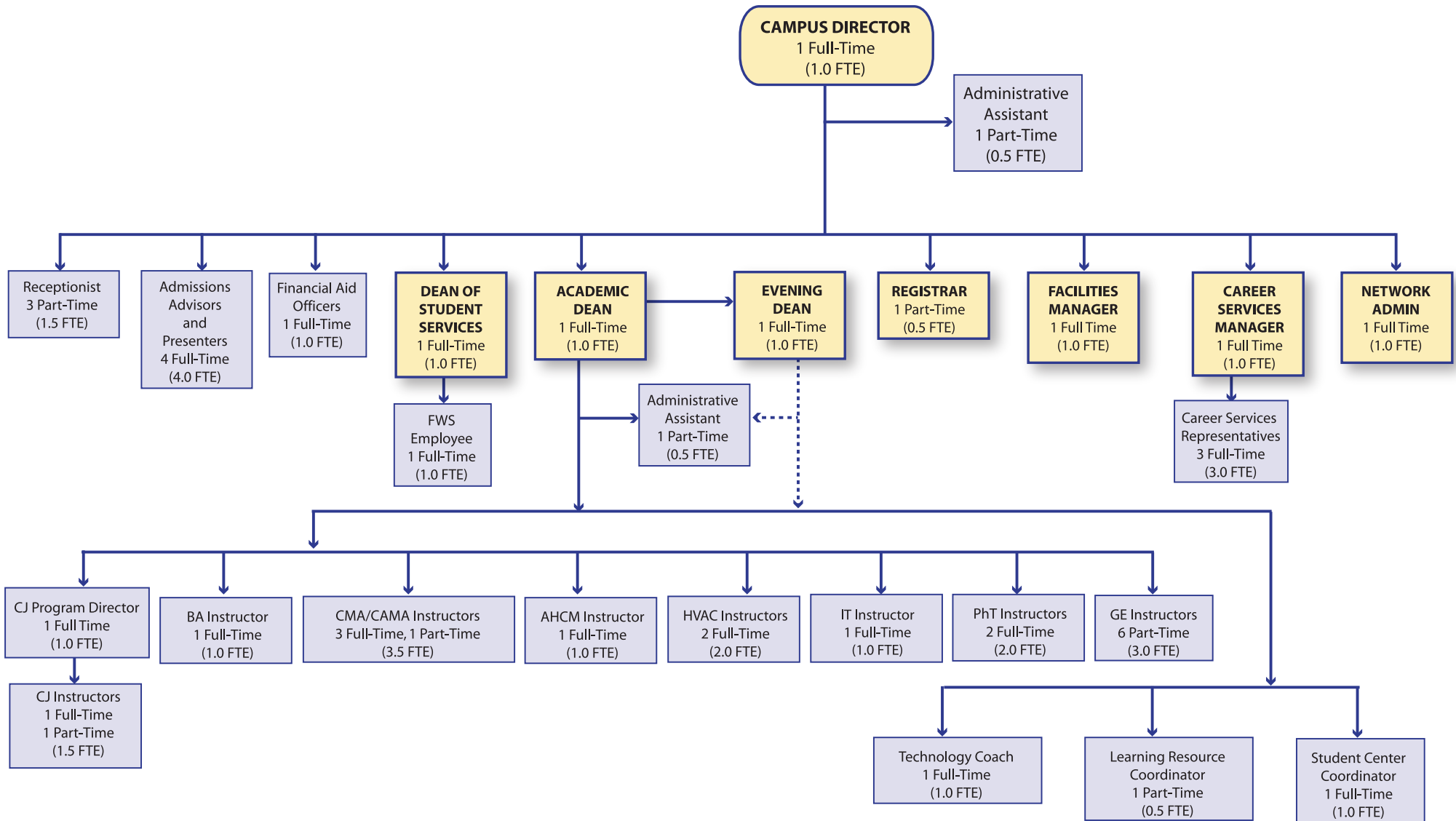


## Lancaster Campus Organization Chart - Month 24 (Exhibit 12)



Please note that staffing is based on student enrollment projections. Both full and part time positions are required to accommodate the projected enrollments. The mixture of full and part time faculty is dependent upon the number of sessions offered and when they are scheduled (i.e., morning, afternoon, or evening session).

Some of the part time positions reflected in this chart will be combined.

The following positions are likely to be combined:

- Administrative Assistant and Registrar
- Administrative Assistant to the Deans and Receptionist
- Evening Dean and Faculty position