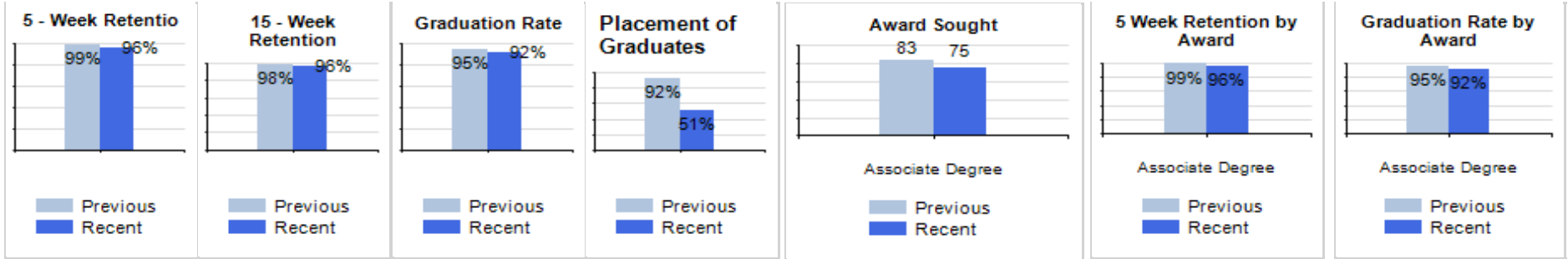


## Longitudinal Program Data - Dental Hygiene: Data by Campus

Date Range for Previous Program Data		Date Range for Recent Program Data	
From:	To:	From:	To:
4/8/2013	5/5/2014	6/9/2014	7/6/2015

Campus	Previous Data					Recent Data				
	Number of Students	5 - Week Retention	15 - Week Retention	Graduation Rate	Placement of Graduates	Number of Students	5 - Week Retention	15 - Week Retention	Graduation Rate	Placement of Graduates
Ontario	24	100%	100%	92%	95%	11	100%	100%	91%	20%
San Diego	26	100%	96%	96%	88%	36	97%	97%	97%	60%
Visalia	33	97%	97%	97%	94%	28	93%	93%	86%	50%
All	83	99%	98%	95%	92%	75	96%	96%	92%	51%
Associate Degree	83	99%	98%	95%	92%	75	96%	96%	92%	51%



**GOALS:**

**Graduation Rate: >=70%**

**Placement Rate: >=70%**

**Attendance: >=80% of Students at 85% Attendance**

- <85% attendance is a student missing more than 3 out of 20 days of a 3-unit course. Does not include any distance education courses in calculation

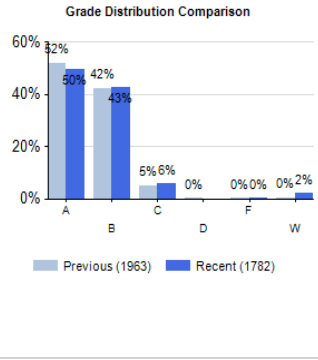
**Course Completion: 90%**

- Course Completion is the number of students receiving passing grade who started the course (includes withdraws as not completed)

Longitudinal Program Data - Dental Hygiene: Data by Course

Date Range for Previous Program Review Data		Date Range for Recent Program Review Data	
From:	To:	From:	To:
4/8/2013	5/5/2014	6/9/2014	7/6/2015

Course Category	Previous Program Data					Recent Program Data				
	Course Code	Times Taught	# Student	% Attending > 85%	% Course Complete	Course Code	Times Taught	# Student	% Attending > 85%	% Course Complete
Core	DH10	5	83	99%	99%	DH10	5	74	100%	97%
	DH11	5	83	100%	99%	DH11	5	74	99%	97%
	DH110	5	83	100%	99%	DH110	5	74	100%	97%
	DH111	5	83	100%	99%	DH111	5	75	100%	96%
	DH112	5	83	100%	99%	DH112	5	74	100%	97%
	DH114	5	83	99%	99%	DH114	5	74	100%	97%
	DH12	5	83	100%	99%	DH12	5	74	100%	97%
	DH120	5	80	100%	100%	DH120	5	72	100%	100%
	DH123	5	80	100%	100%	DH123	5	72	100%	100%
	DH124	5	80	100%	100%	DH124	5	72	100%	100%
	DH13	5	83	99%	99%	DH13	5	74	99%	97%
	DH132	5	79	100%	100%	DH132	5	72	100%	97%
	DH133	5	79	100%	100%	DH133	5	72	100%	97%
	DH134	5	79	100%	100%	DH134	6	73	100%	96%
	DH14	5	83	99%	99%	DH14	5	75	100%	96%
	DH143	6	80	100%	99%	DH143	6	71	100%	99%
	DH20	5	80	100%	100%	DH20	5	72	100%	100%
	DH21	5	80	100%	100%	DH21	5	72	100%	100%
	DH22	5	80	100%	100%	DH22	5	72	100%	100%
	DH24	5	80	100%	100%	DH24	5	72	100%	100%
	DH26	5	80	100%	100%	DH26	5	72	100%	100%
	DH30	5	79	100%	100%	DH30	5	72	100%	97%
	DH31	5	79	100%	100%	DH31	5	72	100%	97%
	DH32	5	79	100%	100%	DH32	5	72	100%	97%
	DH33	5	79	100%	100%	DH33	5	72	100%	97%
	DH399	5	79	100%	100%	DH399	5	72	99%	97%
	DH4	5	79	100%	100%	DH4	5	70	99%	100%
	DH42	5	79	100%	100%	DH42	5	70	99%	100%
	DH45	5	79	100%	100%	DH45	5	70	99%	100%
	DH46	5	79	100%	100%	DH46	5	70	99%	100%
	DH499	5	79	100%	100%	DH499	5	70	100%	100%
	<b>Total</b>	<b>156</b>	<b>83</b>	<b>100%</b>	<b>100%</b>	<b>Total</b>	<b>157</b>	<b>75</b>	<b>100%</b>	<b>98%</b>
<b>All Courses</b>	<b>Total</b>	<b>156</b>	<b>83</b>	<b>100%</b>	<b>Total</b>	<b>157</b>	<b>75</b>	<b>100%</b>	<b>98%</b>	



GOALS:

Graduation Rate: >=70%

Placement Rate: >=70%

Attendance: >=80% of Students at 85% Attendance

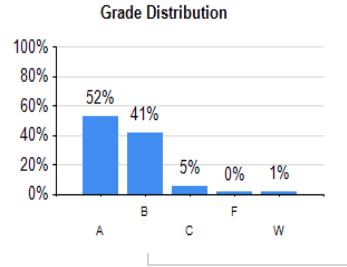
<85% attendance is a student missing more than 3 out of 20 days of a 3-unit course. Does not include any distance education courses in calculation  
 Course Completion: 90%

• Course Completion is the number of students receiving passing grade who started the course (includes withdraws as not completed)

Current Program Data - Dental Hygiene

Date Range of Current Program Measures	
From:	To:
10/27/2014	10/10/2016

Course Category	Course Code	Times Taught	# Students	% Attending > 85%	% Course Complete
Core	DH10	9	141	100%	99%
	DH11	9	141	99%	99%
	DH110	9	141	100%	99%
	DH111	9	118	100%	98%
	DH112	9	141	99%	99%
	DH114	9	141	100%	99%
	DH115	2	23	96%	100%
	DH12	9	141	100%	99%
	DH120	9	143	100%	100%
	DH123	9	145	100%	99%
	DH124	9	143	99%	100%
	DH13	9	141	99%	99%
	DH132	9	133	100%	98%
	DH133	9	133	100%	98%
	DH134	9	134	100%	98%
	DH14	7	118	100%	98%
	DH143	10	128	100%	99%
	DH16	2	23	96%	100%
	DH18	2	23	96%	100%
	DH20	9	143	100%	100%
	DH21	9	143	100%	100%
	DH22	9	143	100%	100%
	DH24	9	143	99%	100%
	DH26	9	143	99%	99%
	DH30	9	133	100%	98%
	DH31	9	133	100%	98%
	DH32	9	133	100%	98%
	DH33	9	133	100%	98%
	DH399	9	133	98%	98%
	DH4	9	127	99%	100%
DH42	9	127	99%	100%	
DH45	9	127	99%	100%	
DH46	9	127	99%	100%	
DH499	9	127	99%	100%	
<b>Total</b>		<b>284</b>	<b>208</b>	<b>100%</b>	<b>99%</b>
<b>All Courses</b>	<b>Total</b>	<b>284</b>	<b>208</b>	<b>100%</b>	<b>99%</b>



GOALS:  
 Attendance: 85% of Students at 85% Attendance  
 Course Completion: 90%

**Program Aggregate Data - Dental Hygiene: Program Learning Outcome Measures**

Date Range for Program Outcome Measures	
From:	To:
10/27/2014	10/10/2016

Program Learning Outcome Statements	# Students Assessed	# Assessments Delivered	% Mastery Rate	# Assessed with Rubric	# Assessed nonRubric
-------------------------------------	---------------------	-------------------------	----------------	------------------------	----------------------

PLO Mastery Percent
No Data Available

Course Learning Outcome Mastery	
Number of CLOs	% of CLOs

**GOALS:**  
**Mastery Level: 80%**

## Dental Hygiene Course by Course Review

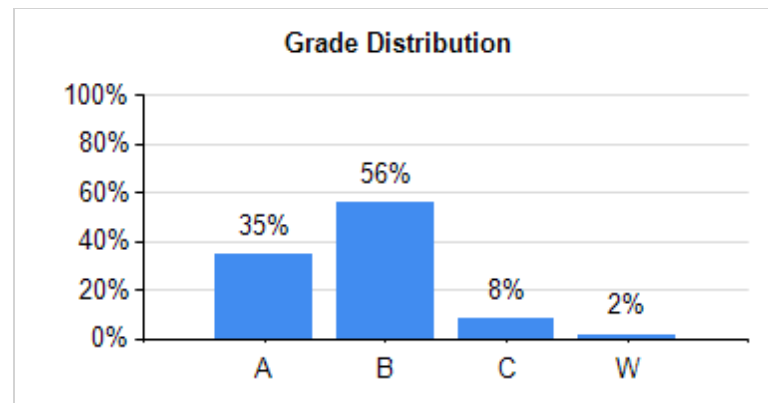
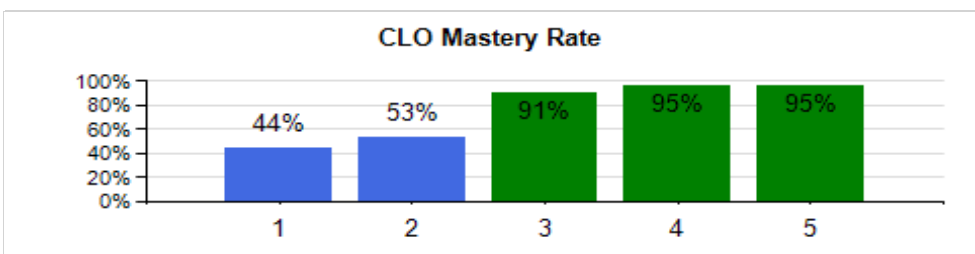
### Date Range for Course by Course Measures

<b>From:</b>	<b>To:</b>
10/27/2014	10/10/2016

### DH11: Oral Radiology (2 Units)

Course Learning Outcome Statements	# Students Assessed	# Assessments Delivered	% Mastery Rate	# Assessed with Rubric	# Assessed nonRubric
CLO-DH11-1: Utilize knowledge of radiation physics and characteristics in the management of patient exposure and safety	95	95	44%	0	95
CLO-DH11-2: Identify anatomical landmarks, anomalies, restorations, caries, periapical lesions and other possible pathological defects in dental radiographs and images	95	95	53%	0	95
CLO-DH11-3: Determine radiographic prescription based on individual patient needs and use of standardized guidelines	95	95	91%	0	95
CLO-DH11-4: Identify the various radiographic principles, techniques, and errors that a clinician may encounter or utilize while exposing radiographs	65	65	95%	0	65
CLO-DH11-5: Identify the components of an analog film packet as well as film processing method and errors	65	65	95%	0	65

Course Code	# Times Taught	# Students	% Attending > =85%	Course Completion
DH11	9	141	99%	99%



**Dental Hygiene Course by Course Review**

**Date Range for Course by Course Measures**

<b>From:</b>	<b>To:</b>
10/27/2014	10/10/2016

**DH11: Oral Radiology (2 Units)**

**DH11 Student Response to Course Survey Questions**

Question Text	Strongly Agree	Agree	NKO/NA	Question Rating**
Course assignments and activities are helping me learn the Student Learning Outcomes (SLOs).	40	11	3	3.57
Course assignments and activities are helping me achieve the Student Learning Outcomes (SLOs).	80	22	6	3.57
Course content is relevant to my lifelong learning or to my career.	86	22	0	3.80
Course policies and expectations are clear on the syllabus.	45	8	0	3.85
Course policies and expectations are outlined on the syllabus.	90	16	0	3.85
Course resources are adequate and available for my learning needs. (e.g. computers, textbooks, equipment, supplies, and tools.)	86	22	0	3.80
Question Text	Excellent	Good	Fair	Question Rating**
Overall rating for this course.	94	12	2	2.85

Question Text	Very High – I've learned all of them	High – I've learned most of them	Question Rating**
My level of mastery of the Student Learning Outcomes (SLOs) in this course is:	38	70	3.35

Question Text	Too much	Just right	Question Rating**
The amount of content/material presented in this course is:	10	98	2.09

Question Text	Yes	Question Rating**
I approached this course responsibly to maximize my learning. (e.g. I attended class every day, completed assignments on time, participated in class, adhered to classroom expectations, was in dress code, treated instructor and students with respect, etc.)	106	2.00

**GOAL**

**Question Rating: >=3.0**

\*Questions Rated on a 4 Point Likert Scale (4 = Strongly Agree to 1 = Strongly Disagree)

\*\*Questions Rated on a 4 Point Likert Scale (4 = Excellent to 1 = Poor)

## Dental Hygiene Course by Course Review

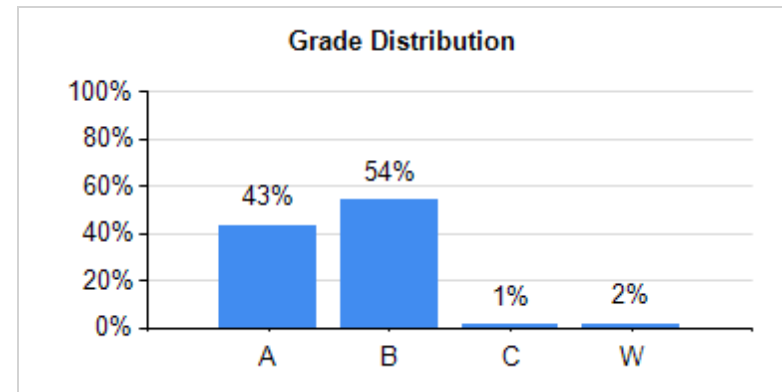
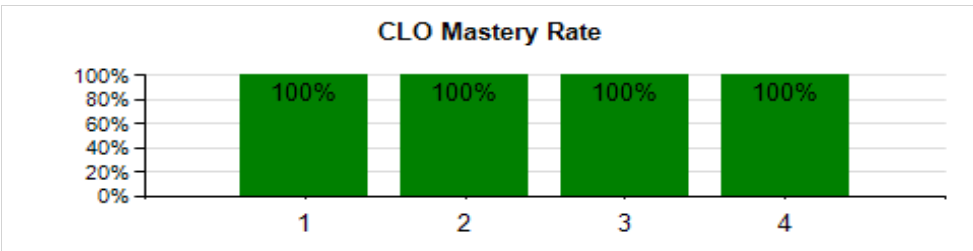
### Date Range for Course by Course Measures

<b>From:</b>	<b>To:</b>
10/27/2014	10/10/2016

### DH111: Oral Radiology-Lab (1 Units)

Course Learning Outcome Statements	# Students Assessed	# Assessments Delivered	% Mastery Rate	# Assessed with Rubric	# Assessed nonRubric
CLO-DH111-1: Apply rules of radiation safety and asepsis for the protection of both patient and clinician	105	208	100%	208	0
CLO-DH111-2: Expose, process and correctly mount diagnostic dental radiographic surveys	105	208	100%	208	0
CLO-DH111-3: Identify and correct errors in processing and exposure of dental radiographs and images	105	208	100%	208	0
CLO-DH111-4: Evaluate for anatomical landmarks, anomalies, restorations, caries, periapical lesions and other possible pathological defects in dental radiographs and images	105	208	100%	208	0

Course Code	# Times Taught	# Students	% Attending > =85%	Course Completion
DH111	9	118	100%	98%



**Dental Hygiene Course by Course Review**

Date Range for Course by Course Measures	
<b>From:</b>	<b>To:</b>
10/27/2014	10/10/2016

**DH111: Oral Radiology-Lab (1 Units)**

**DH111 Student Response to Course Survey Questions**

Question Text	Strongly Agree	Agree	Disagree	NKO/NA	Question Rating**
Course assignments and activities are helping me learn the Student Learning Outcomes (SLOs).	26	4	1	1	3.69
Course assignments and activities are helping me achieve the Student Learning Outcomes (SLOs).	52	8	2	2	3.69
Course content is relevant to my lifelong learning or to my career.	60	4	0	0	3.94
Course policies and expectations are clear on the syllabus.	29	3	0	0	3.91
Course policies and expectations are outlined on the syllabus.	58	6	0	0	3.91
Course resources are adequate and available for my learning needs. (e.g. computers, textbooks, equipment, supplies, and tools.)	52	12	0	0	3.81

Question Text	Excellent	Good	Question Rating**
Overall rating for this course.	58	6	2.91

Question Text	Very High – I've learned all of them	High – I've learned most of them	Question Rating**
My level of mastery of the Student Learning Outcomes (SLOs) in this course is:	30	32	3.48

Question Text	Too much	Just right	Question Rating**
The amount of content/material presented in this course is:	2	62	2.03

Question Text	Yes	Question Rating**
I approached this course responsibly to maximize my learning. (e.g. I attended class every day, completed assignments on time, participated in class, adhered to classroom expectations, was in dress code, treated instructor and students with respect, etc.)	64	2.00

**GOAL**

**Question Rating: >=3.0**

\*Questions Rated on a 4 Point Likert Scale (4 = Strongly Agree to 1 = Strongly Disagree)

\*\*Questions Rated on a 4 Point Likert Scale (4 = Excellent to 1 = Poor)



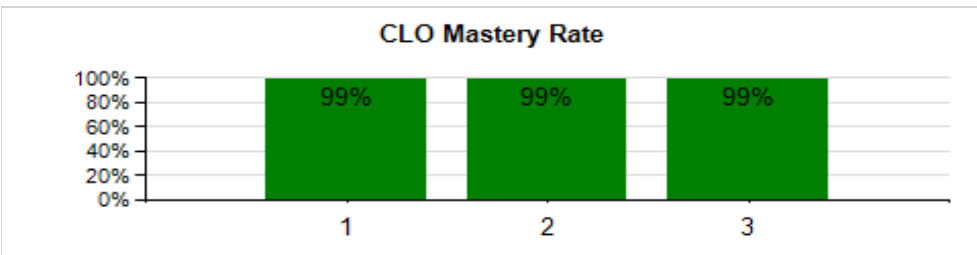
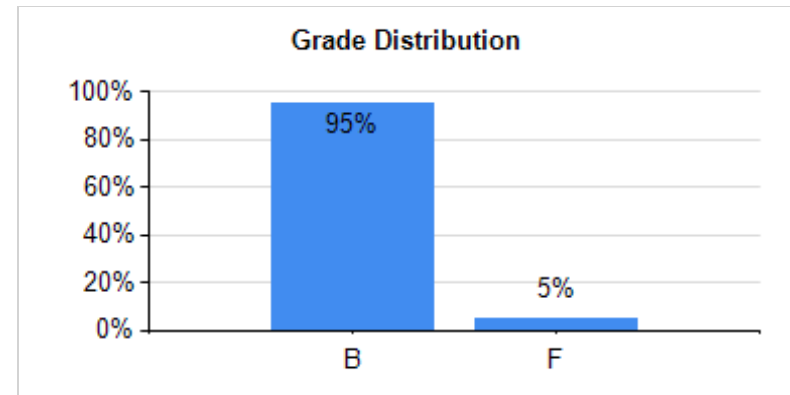
## Dental Hygiene Course by Course Review

Date Range for Course by Course Measures	
From:	To:
10/27/2014	10/10/2016

### DH123: Clinical Practice 1 (3 Units)

Course Learning Outcome Statements	# Students Assessed	# Assessments Delivered	% Mastery Rate	# Assessed with Rubric	# Assessed nonRubric
CLO-DH123-1: Establish a dental hygiene care plan that reflects the realistic goals and treatment strategies to facilitate optimal oral health through identification and analysis of each patient's physical and oral health assessment	84	87	99%	85	0
CLO-DH123-2: Provide patient-centered treatment and evidence-based care in a manner minimizing risk and optimizing oral health at the novice to beginner level	84	87	99%	85	0
CLO-DH123-3: Record all documentation relevant to patient care and evaluate outcomes at the novice to beginner level	84	87	99%	85	0

Course Code	# Times Taught	# Students	% Attending > =85%	Course Completion
DH123	9	145	100%	99%



**Dental Hygiene Course by Course Review**

Date Range for Course by Course Measures	
From:	To:
10/27/2014	10/10/2016

**DH123: Clinical Practice 1 (3 Units)**

**DH123 Student Response to Course Survey Questions**

Question Text	Strongly Agree	Agree	Strongly Disagree	Question Rating**
Course assignments and activities are helping me learn the Student Learning Outcomes (SLOs).	9	5	1	3.47
Course assignments and activities are helping me achieve the Student Learning Outcomes (SLOs).	18	10	2	3.47
Course content is relevant to my lifelong learning or to my career.	22	8	0	3.73
Course policies and expectations are clear on the syllabus.	8	7	0	3.53
Course policies and expectations are outlined on the syllabus.	16	14	0	3.53
Course resources are adequate and available for my learning needs. (e.g. computers, textbooks, equipment, supplies, and tools.)	16	14	0	3.53

Question Text	Excellent	Good	Question Rating**
Overall rating for this course.	22	8	2.73

Question Text	Very High – I've learned all of them	High – I've learned most of them	Question Rating**
My level of mastery of the Student Learning Outcomes (SLOs) in this course is:	16	14	3.53

Question Text	Just right	Question Rating**
The amount of content/material presented in this course is:	30	2.00

Question Text	Yes	Question Rating**
I approached this course responsibly to maximize my learning. (e.g. I attended class every day, completed assignments on time, participated in class, adhered to classroom expectations, was in dress code, treated instructor and students with respect, etc.)	30	2.00

**GOAL**

Question Rating: **>=3.0**

\*Questions Rated on a 4 Point Likert Scale (4 = Strongly Agree to 1 = Strongly Disagree)

\*\*Questions Rated on a 4 Point Likert Scale (4 = Excellent to 1 = Poor)

## Dental Hygiene Course by Course Review

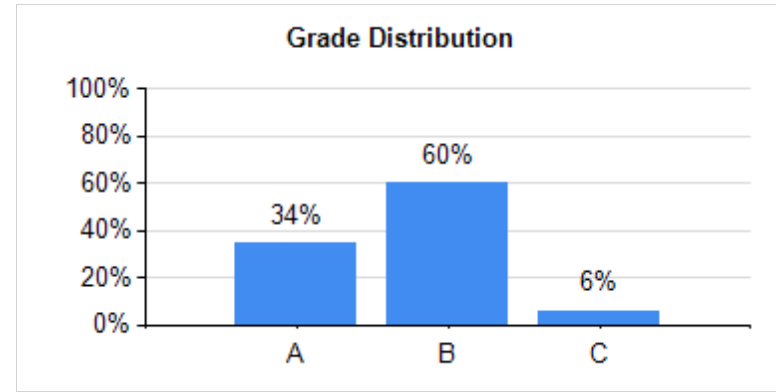
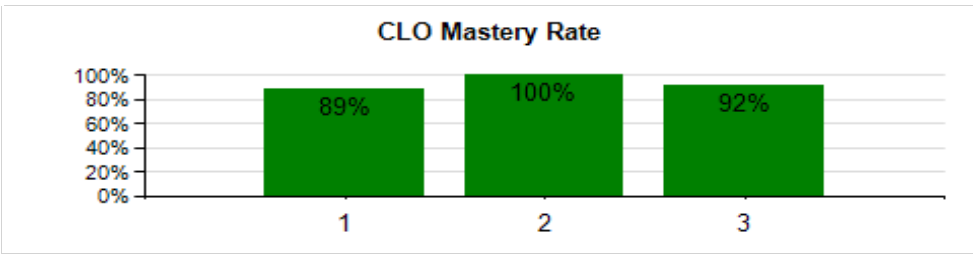
### Date Range for Course by Course Measures

<b>From:</b>	<b>To:</b>
10/27/2014	10/10/2016

### DH22: Patient Mgmt And Geriatrics (2 Units)

Course Learning Outcome Statements	# Students Assessed	# Assessments Delivered	% Mastery Rate	# Assessed with Rubric	# Assessed nonRubric
CLO-DH22-1: Identify and manage medically compromised patients and those with special needs to provide comprehensive dental hygiene care	106	163	89%	72	91
CLO-DH22-2: Identify demographics and life styles of the older adult as they relate to the practice of dental hygiene	91	91	100%	0	91
CLO-DH22-3: Establish positive interpersonal communication through assessment of patient characteristics and motivation	95	152	92%	72	80

Course Code	# Times Taught	# Students	% Attending > =85%	Course Completion
DH22	9	143	100%	100%



**Dental Hygiene Course by Course Review**

**Date Range for Course by Course Measures**

<b>From:</b>	<b>To:</b>
10/27/2014	10/10/2016

**DH22: Patient Mgmt And Geriatrics (2 Units)**

**DH22 Student Response to Course Survey Questions**

Question Text	Strongly Agree	Agree	Strongly Disagree	Question Rating**
Course assignments and activities are helping me learn the Student Learning Outcomes (SLOs).	43	15	0	3.74
Course assignments and activities are helping me achieve the Student Learning Outcomes (SLOs).	86	30	0	3.74
Course content is relevant to my lifelong learning or to my career.	102	14	0	3.88
Course policies and expectations are clear on the syllabus.	50	8	0	3.86
Course policies and expectations are outlined on the syllabus.	100	16	0	3.86
Course resources are adequate and available for my learning needs. (e.g. computers, textbooks, equipment, supplies, and tools.)	84	28	2	3.70
Question Text	Excellent	Good	Fair	Question Rating**
Overall rating for this course.	94	20	2	2.79

Question Text	Very High – I’ve learned all of them	High – I’ve learned most of them	Medium – I’ve learned some of them	Question Rating**
My level of mastery of the Student Learning Outcomes (SLOs) in this course is:	44	70	2	3.36

Question Text	Too much	Just right	Question Rating**
The amount of content/material presented in this course is:	22	94	2.19

Question Text	Yes	Somewhat	Question Rating**
I approached this course responsibly to maximize my learning. (e.g. I attended class every day, completed assignments on time, participated in class, adhered to classroom expectations, was in dress code, treated instructor and students with respect, etc.)	108	8	1.93

**GOAL**

**Question Rating: >=3.0**

\*Questions Rated on a 4 Point Likert Scale (4 = Strongly Agree to 1 = Strongly Disagree)

\*\*Questions Rated on a 4 Point Likert Scale (4 = Excellent to 1 = Poor)

## Dental Hygiene Course by Course Review

### Date Range for Course by Course Measures

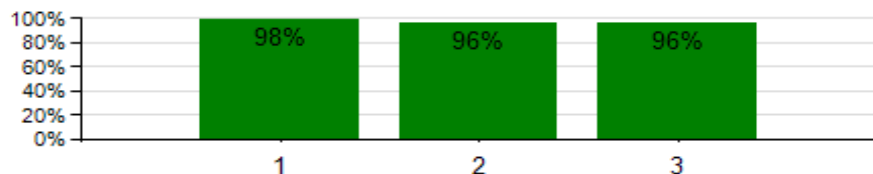
From:	To:
10/27/2014	10/10/2016

### DH33: Clinic Seminar 2 (1 Units)

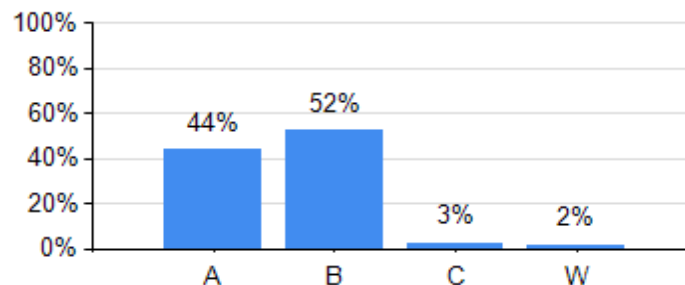
Course Learning Outcome Statements	# Students Assessed	# Assessments Delivered	% Mastery Rate	# Assessed with Rubric	# Assessed nonRubric
CLO-DH33-1: Establish a comprehensive treatment plan for patients with early to advanced periodontal disease through use of patient assessment procedures</p>	60	60	98%	0	60
CLO-DH33-2: Apply advanced instrumentation skills to treatment of patients with early to advanced periodontal disease	83	83	96%	0	83
CLO-DH33-3: Evaluate patient's response to therapy during and at the completion of initial therapy to determine necessary treatment modification, referrals and periodontal maintenance care	83	83	96%	0	83

Course Code	# Times Taught	# Students	% Attending > =85%	Course Completion
DH33	9	133	100%	98%

**CLO Mastery Rate**



**Grade Distribution**



Dental Hygiene Course by Course Review

Date Range for Course by Course Measures

From:	To:
10/27/2014	10/10/2016

**DH33: Clinic Seminar 2 (1 Units)**

**DH33 Student Response to Course Survey Questions**

Question Text	Strongly Agree	Agree	Disagree	Question Rating**
Course assignments and activities are helping me learn the Student Learning Outcomes (SLOs).	38	6	0	3.86
Course assignments and activities are helping me achieve the Student Learning Outcomes (SLOs).	76	12	0	3.86
Course content is relevant to my lifelong learning or to my career.	80	8	0	3.91
Course policies and expectations are clear on the syllabus.	40	4	0	3.91
Course policies and expectations are outlined on the syllabus.	80	8	0	3.91
Course resources are adequate and available for my learning needs. (e.g. computers, textbooks, equipment, supplies, and tools.)	76	10	2	3.84
Question Text	Excellent	Good	Question Rating**	
Overall rating for this course.	80	6	2.93	

Question Text	Very High – I’ve learned all of them	High – I’ve learned most of them	Medium – I’ve learned some of them	Question Rating**
My level of mastery of the Student Learning Outcomes (SLOs) in this course is:	40	46	2	3.43

Question Text	Too much	Just right	Question Rating**
The amount of content/material presented in this course is:	2	86	2.02

Question Text	Yes	Somewhat	Question Rating**
I approached this course responsibly to maximize my learning. (e.g. I attended class every day, completed assignments on time, participated in class, adhered to classroom expectations, was in dress code, treated instructor and students with respect, etc.)	84	4	1.95

**GOAL**

Question Rating: >=3.0

\*Questions Rated on a 4 Point Likert Scale (4 = Strongly Agree to 1 = Strongly Disagree)

\*\*Questions Rated on a 4 Point Likert Scale (4 = Excellent to 1 = Poor)

## Dental Hygiene Course by Course Review

### Date Range for Course by Course Measures

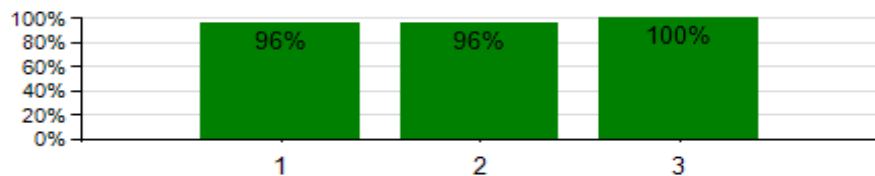
From:	To:
10/27/2014	10/10/2016

### DH4: Periodontics 2 (3 Units)

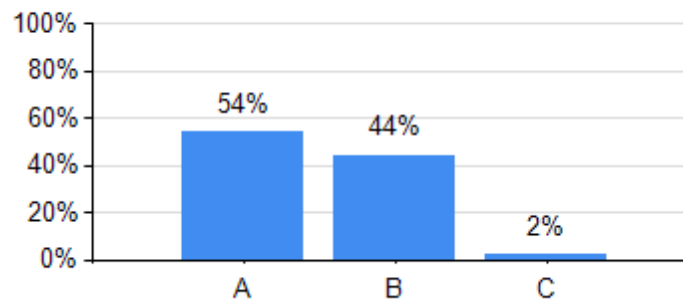
Course Learning Outcome Statements	# Students Assessed	# Assessments Delivered	% Mastery Rate	# Assessed with Rubric	# Assessed nonRubric
CLO-DH4-1: Create an appropriate periodontal treatment and preventive measures to obtain and maintain optimal oral health at the competent level of care	76	76	96%	0	76
CLO-DH4-2: Analyze and evaluate research to determine its validity and relevance in the provision of patient care	27	27	96%	27	0
CLO-DH4-3: Discuss the relationship between periodontal disease and systemic conditions	76	76	100%	0	76

Course Code	# Times Taught	# Students	% Attending > =85%	Course Completion
DH4	9	127	99%	100%

**CLO Mastery Rate**



**Grade Distribution**



**Dental Hygiene Course by Course Review**

**Date Range for Course by Course Measures**

<b>From:</b>	<b>To:</b>
10/27/2014	10/10/2016

**DH4: Periodontics 2 (3 Units)**

**DH4 Student Response to Course Survey Questions**

Question Text	Strongly Agree	Agree	Strongly Disagree	Question Rating**
Course assignments and activities are helping me learn the Student Learning Outcomes (SLOs).	19	5	1	3.68
Course assignments and activities are helping me achieve the Student Learning Outcomes (SLOs).	38	10	2	3.68
Course content is relevant to my lifelong learning or to my career.	40	10	0	3.80
Course policies and expectations are clear on the syllabus.	20	5	0	3.80
Course policies and expectations are outlined on the syllabus.	40	10	0	3.80
Course resources are adequate and available for my learning needs. (e.g. computers, textbooks, equipment, supplies, and tools.)	38	10	2	3.68
Question Text	Excellent	Good	Poor	Question Rating**
Overall rating for this course.	40	8	2	2.72

Question Text	Very High – I've learned all of them	High – I've learned most of them	Medium – I've learned some of them	Question Rating**
My level of mastery of the Student Learning Outcomes (SLOs) in this course is:	28	20	2	3.52

Question Text	Too much	Just right	Too little	Question Rating**
The amount of content/material presented in this course is:	8	40	2	2.12

Question Text	Yes	Somewhat	Question Rating**
I approached this course responsibly to maximize my learning. (e.g. I attended class every day, completed assignments on time, participated in class, adhered to classroom expectations, was in dress code, treated instructor and students with respect, etc.)	48	2	1.96

**GOAL**

**Question Rating: >=3.0**

\*Questions Rated on a 4 Point Likert Scale (4 = Strongly Agree to 1 = Strongly Disagree)

\*\*Questions Rated on a 4 Point Likert Scale (4 = Excellent to 1 = Poor)



## Dental Hygiene Course by Course Review

### Date Range for Course by Course Measures

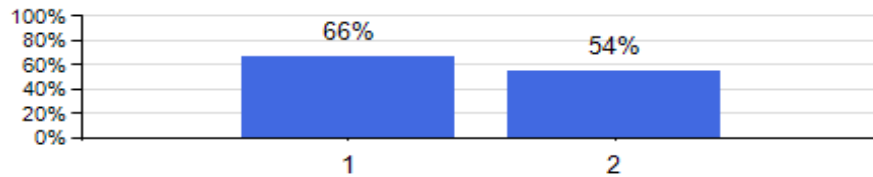
From:	To:
10/27/2014	10/10/2016

### DH10: Oral Biology (3 Units)

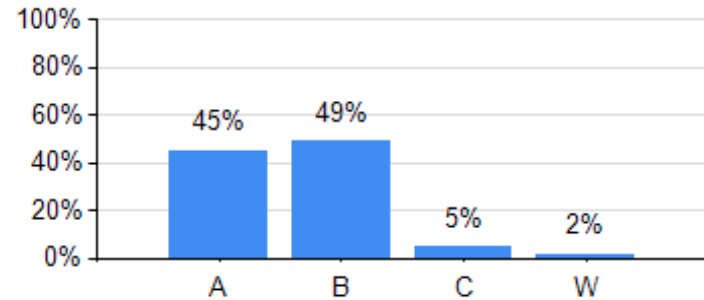
Course Learning Outcome Statements	# Students Assessed	# Assessments Delivered	% Mastery Rate	# Assessed with Rubric	# Assessed nonRubric
CLO-DH10-1: Apply knowledge of embryology and histology of normal oral structures to dental hygiene procedures	65	65	66%	0	65
CLO-DH10-2: Utilize the anatomical characteristics and eruption sequence of each of the deciduous and permanent teeth as they relate to function and dental care	65	65	54%	0	65

Course Code	# Times Taught	# Students	% Attending > =85%	Course Completion
DH10	9	141	100%	99%

**CLO Mastery Rate**



**Grade Distribution**



**Dental Hygiene Course by Course Review**

**Date Range for Course by Course Measures**

<b>From:</b>	<b>To:</b>
10/27/2014	10/10/2016

**DH10: Oral Biology (3 Units)**

**DH10 Student Response to Course Survey Questions**

Question Text	Strongly Agree	Agree	Disagree	Strongly Disagree	Question Rating**
Course assignments and activities are helping me learn the Student Learning Outcomes (SLOs).	44	16	2	0	3.68
Course assignments and activities are helping me achieve the Student Learning Outcomes (SLOs).	88	32	4	0	3.68
Course content is relevant to my lifelong learning or to my career.	94	24	4	2	3.69
Course policies and expectations are clear on the syllabus.	52	9	1	0	3.82
Course policies and expectations are outlined on the syllabus.	104	18	2	0	3.82
Course resources are adequate and available for my learning needs. (e.g. computers, textbooks, equipment, supplies, and tools.)	90	28	4	2	3.66
Question Text	Excellent	Good	Fair	Poor	Question Rating**
Overall rating for this course.	106	8	8	2	2.76

Question Text	Very High – I've learned all of them	High – I've learned most of them	Medium – I've learned some of them	Question Rating**
My level of mastery of the Student Learning Outcomes (SLOs) in this course is:	38	76	10	3.23

Question Text	Too much	Just right	Too little	Question Rating**
The amount of content/material presented in this course is:	14	108	2	2.10

Question Text	Yes	Question Rating**
I approached this course responsibly to maximize my learning. (e.g. I attended class every day, completed assignments on time, participated in class, adhered to classroom expectations, was in dress code, treated instructor and students with respect, etc.)	124	2.00

**GOAL**

**Question Rating: >=3.0**

\*Questions Rated on a 4 Point Likert Scale (4 = Strongly Agree to 1 = Strongly Disagree)

\*\*Questions Rated on a 4 Point Likert Scale (4 = Excellent to 1 = Poor)

## Dental Hygiene Course by Course Review

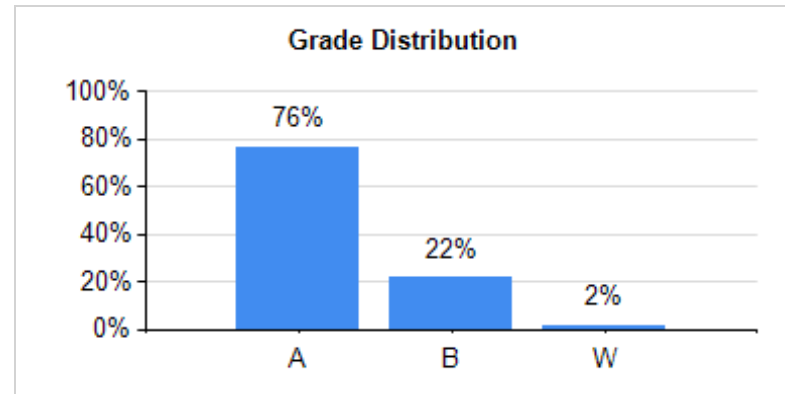
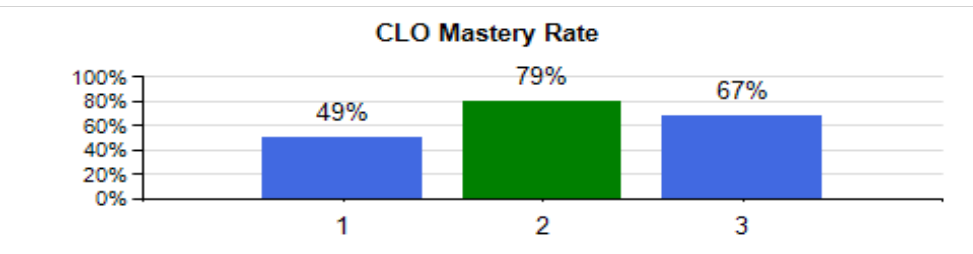
### Date Range for Course by Course Measures

From:	To:
10/27/2014	10/10/2016

### DH133: Clinic Seminar 2 Lab (1 Units)

Course Learning Outcome Statements	# Students Assessed	# Assessments Delivered	% Mastery Rate	# Assessed with Rubric	# Assessed nonRubric
CLO-DH133-1: Establish a comprehensive treatment plan for patients with early to advanced periodontal disease through use of patient assessment procedures	83	83	49%	0	83
CLO-DH133-2: Apply advanced instrumentation skills to treatment of patients with early to advanced periodontal disease	48	48	79%	0	48
CLO-DH133-3: Evaluate patient's response to therapy during and at the completion of initial therapy to determine necessary treatment modification, referrals and periodontal maintenance care	83	83	67%	0	83

Course Code	# Times Taught	# Students	% Attending > =85%	Course Completion
DH133	9	133	100%	98%



**Dental Hygiene Course by Course Review**

**Date Range for Course by Course Measures**

<b>From:</b>	<b>To:</b>
10/27/2014	10/10/2016

**DH133: Clinic Seminar 2 Lab (1 Units)**

**DH133 Student Response to Course Survey Questions**

Question Text	Strongly Agree	Agree	NKO/NA	Question Rating**
Course assignments and activities are helping me learn the Student Learning Outcomes (SLOs).	29	8	0	3.78
Course assignments and activities are helping me achieve the Student Learning Outcomes (SLOs).	58	16	0	3.78
Course content is relevant to my lifelong learning or to my career.	68	6	0	3.92
Course policies and expectations are clear on the syllabus.	33	4	0	3.89
Course policies and expectations are outlined on the syllabus.	66	8	0	3.89
Course resources are adequate and available for my learning needs. (e.g. computers, textbooks, equipment, supplies, and tools.)	60	12	2	3.73
Question Text	Excellent	Good		Question Rating**
Overall rating for this course.	68	6		2.92

Question Text	Very High – I've learned all of them	High – I've learned most of them	Question Rating**
My level of mastery of the Student Learning Outcomes (SLOs) in this course is:	34	40	3.46

Question Text	Too much	Just right	Question Rating**
The amount of content/material presented in this course is:	2	72	2.03

Question Text	Yes	Somewhat	Question Rating**
I approached this course responsibly to maximize my learning. (e.g. I attended class every day, completed assignments on time, participated in class, adhered to classroom expectations, was in dress code, treated instructor and students with respect, etc.)	70	4	1.95

**GOAL**

**Question Rating: >=3.0**

\*Questions Rated on a 4 Point Likert Scale (4 = Strongly Agree to 1 = Strongly Disagree)

\*\*Questions Rated on a 4 Point Likert Scale (4 = Excellent to 1 = Poor)

## Dental Hygiene Course by Course Review

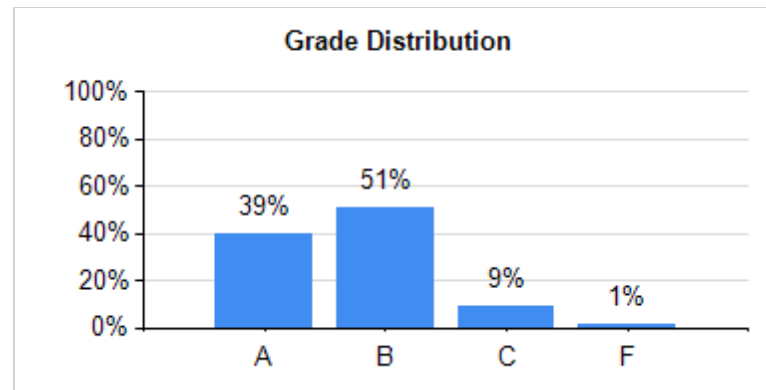
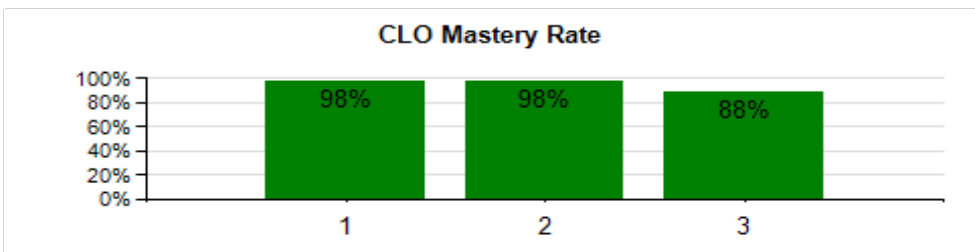
### Date Range for Course by Course Measures

From:	To:
10/27/2014	10/10/2016

### DH26: Community Oral Health (2 Units)

Course Learning Outcome Statements	# Students Assessed	# Assessments Delivered	% Mastery Rate	# Assessed with Rubric	# Assessed nonRubric
CLO-DH26-1: Identify barriers to dental health care and state available resources that improve access	91	91	98%	0	91
CLO-DH26-2: Assess, plan, implement and evaluate a community based program that promotes oral health	91	91	98%	0	91
CLO-DH26-3: Adapt to changes in demographics in the community and cultural diversity in dental hygiene practice and care at the novice to beginner level	91	91	88%	0	91

Course Code	# Times Taught	# Students	% Attending > =85%	Course Completion
DH26	9	143	99%	99%



**Dental Hygiene Course by Course Review**

**Date Range for Course by Course Measures**

<b>From:</b>	<b>To:</b>
10/27/2014	10/10/2016

**DH26: Community Oral Health (2 Units)**

**DH26 Student Response to Course Survey Questions**

Question Text	Strongly Agree	Agree	Disagree	Strongly Disagree	NKO/NA	Question Rating**
Course assignments and activities are helping me learn the Student Learning Outcomes (SLOs).	21	19	2	3	1	3.22
Course assignments and activities are helping me achieve the Student Learning Outcomes (SLOs).	42	38	4	6	2	3.22
Course content is relevant to my lifelong learning or to my career.	44	34	8	4	2	3.24
Course policies and expectations are clear on the syllabus.	24	16	2	2	1	3.33
Course policies and expectations are outlined on the syllabus.	48	32	4	4	2	3.33
Course resources are adequate and available for my learning needs. (e.g. computers, textbooks, equipment, supplies, and tools.)	48	32	0	10	2	3.24
Question Text	Excellent	Good	Fair	Poor	Question Rating**	
Overall rating for this course.	44	26	10	12	2.11	

Question Text	Very High – I've learned all of them	High – I've learned most of them	Medium – I've learned some of them	Low – I've learned none of them	Question Rating**
My level of mastery of the Student Learning Outcomes (SLOs) in this course is:	16	54	12	10	2.83

Question Text	Too much	Just right	Too little	Question Rating**
The amount of content/material presented in this course is:	22	58	12	2.11

Question Text	Yes	Somewhat	Question Rating**
I approached this course responsibly to maximize my learning. (e.g. I attended class every day, completed assignments on time, participated in class, adhered to classroom expectations, was in dress code, treated instructor and students with respect, etc.)	88	4	1.96

**GOAL**

**Question Rating: >=3.0**

\*Questions Rated on a 4 Point Likert Scale (4 = Strongly Agree to 1 = Strongly Disagree)

\*\*Questions Rated on a 4 Point Likert Scale (4 = Excellent to 1 = Poor)

## Dental Hygiene Course by Course Review

### Date Range for Course by Course Measures

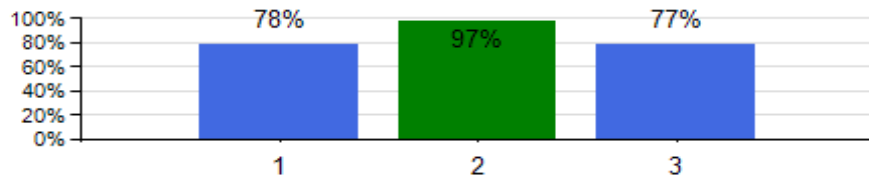
From:	To:
10/27/2014	10/10/2016

### DH31: Pharmacology (3 Units)

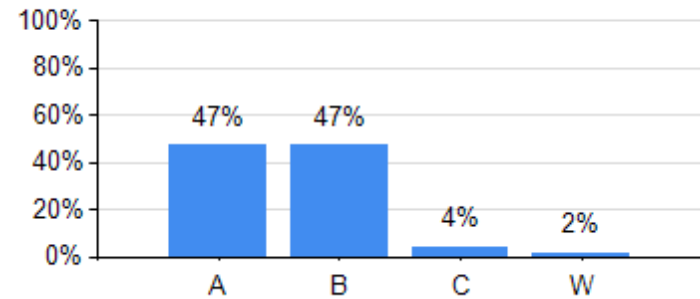
Course Learning Outcome Statements	# Students Assessed	# Assessments Delivered	% Mastery Rate	# Assessed with Rubric	# Assessed nonRubric
CLO-DH31-1: Apply the fundamental principles of drug administration and pharmacokinetics	27	27	78%	0	27
CLO-DH31-2: Research patient medications to determine relative and absolute contraindications to dental hygiene care	71	71	97%	0	71
CLO-DH31-3: Identify and describe medications commonly used in dentistry	71	71	77%	0	71

Course Code	# Times Taught	# Students	% Attending > =85%	Course Completion
DH31	9	133	100%	98%

**CLO Mastery Rate**



**Grade Distribution**



**Dental Hygiene Course by Course Review**

**Date Range for Course by Course Measures**

<b>From:</b>	<b>To:</b>
10/27/2014	10/10/2016

**DH31: Pharmacology (3 Units)**

**DH31 Student Response to Course Survey Questions**

Question Text	Strongly Agree	Agree	Disagree	NKO/NA	Question Rating**
Course assignments and activities are helping me learn the Student Learning Outcomes (SLOs).	43	12	0	1	3.71
Course assignments and activities are helping me achieve the Student Learning Outcomes (SLOs).	86	24	0	2	3.71
Course content is relevant to my lifelong learning or to my career.	94	18	0	0	3.84
Course policies and expectations are clear on the syllabus.	49	7	0	0	3.88
Course policies and expectations are outlined on the syllabus.	98	14	0	0	3.88
Course resources are adequate and available for my learning needs. (e.g. computers, textbooks, equipment, supplies, and tools.)	90	20	2	0	3.79

Question Text	Excellent	Good	Question Rating**
Overall rating for this course.	86	26	2.77

Question Text	Very High – I've learned all of them	High – I've learned most of them	Medium – I've learned some of them	Question Rating**
My level of mastery of the Student Learning Outcomes (SLOs) in this course is:	30	66	16	3.13

Question Text	Too much	Just right	Too little	Question Rating**
The amount of content/material presented in this course is:	32	78	2	2.27

Question Text	Yes	Somewhat	Question Rating**
I approached this course responsibly to maximize my learning. (e.g. I attended class every day, completed assignments on time, participated in class, adhered to classroom expectations, was in dress code, treated instructor and students with respect, etc.)	108	4	1.96

**GOAL**

**Question Rating: >=3.0**

\*Questions Rated on a 4 Point Likert Scale (4 = Strongly Agree to 1 = Strongly Disagree)

\*\*Questions Rated on a 4 Point Likert Scale (4 = Excellent to 1 = Poor)



## Dental Hygiene Course by Course Review

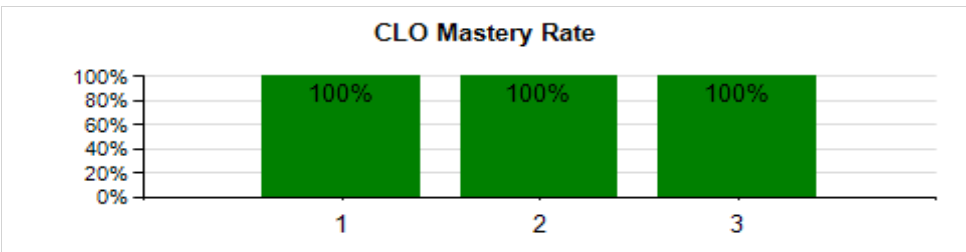
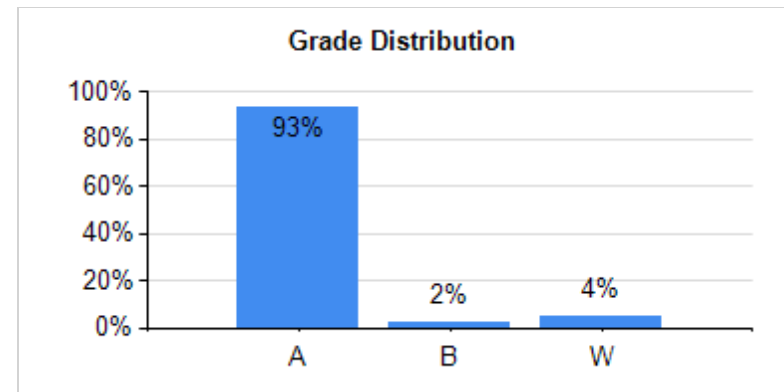
### Date Range for Course by Course Measures

<b>From:</b>	<b>To:</b>
10/27/2014	10/10/2016

### DH114: Introduction To Clinic-La (2 Units)

Course Learning Outcome Statements	# Students Assessed	# Assessments Delivered	% Mastery Rate	# Assessed with Rubric	# Assessed nonRubric
CLO-DH114-1: Establish a dental hygiene care plan that reflects the realistic goals and treatment strategies to facilitate optimal oral health through identification and analysis of each patient's physical and oral health assessment	59	59	100%	59	0
CLO-DH114-2: Provide patient-centered treatment and evidence-based care in a manner minimizing risk and optimizing oral health at the novice level	59	59	100%	59	0
CLO-DH114-3: Record all documentation relevant to patient care and evaluate outcomes at the novice level	59	59	100%	59	0

Course Code	# Times Taught	# Students	% Attending > =85%	Course Completion
DH114	9	141	100%	99%



**Dental Hygiene Course by Course Review**

**Date Range for Course by Course Measures**

<b>From:</b>	<b>To:</b>
10/27/2014	10/10/2016

**DH114: Introduction To Clinic-La (2 Units)**

**DH114 Student Response to Course Survey Questions**

Question Text	Strongly Agree	Agree	Question Rating**
Course assignments and activities are helping me learn the Student Learning Outcomes (SLOs).	27	6	3.82
Course assignments and activities are helping me achieve the Student Learning Outcomes (SLOs).	54	12	3.82
Course content is relevant to my lifelong learning or to my career.	56	10	3.85
Course policies and expectations are clear on the syllabus.	28	6	3.82
Course policies and expectations are outlined on the syllabus.	56	12	3.82
Course resources are adequate and available for my learning needs. (e.g. computers, textbooks, equipment, supplies, and tools.)	52	14	3.79
Question Text	Excellent	Good	Question Rating**
Overall rating for this course.	54	12	2.82

Question Text	Very High – I’ve learned all of them	High – I’ve learned most of them	Question Rating**
My level of mastery of the Student Learning Outcomes (SLOs) in this course is:	20	46	3.30

Question Text	Too much	Just right	Question Rating**
The amount of content/material presented in this course is:	2	64	2.03

Question Text	Yes	Somewhat	Question Rating**
I approached this course responsibly to maximize my learning. (e.g. I attended class every day, completed assignments on time, participated in class, adhered to classroom expectations, was in dress code, treated instructor and students with respect, etc.)	64	2	1.97

**GOAL**

**Question Rating: >=3.0**

\*Questions Rated on a 4 Point Likert Scale (4 = Strongly Agree to 1 = Strongly Disagree)

\*\*Questions Rated on a 4 Point Likert Scale (4 = Excellent to 1 = Poor)

## Dental Hygiene Course by Course Review

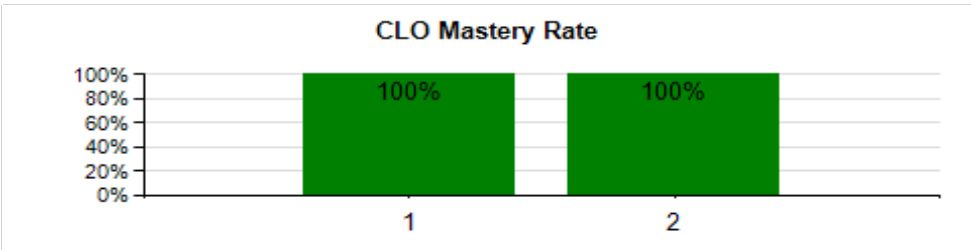
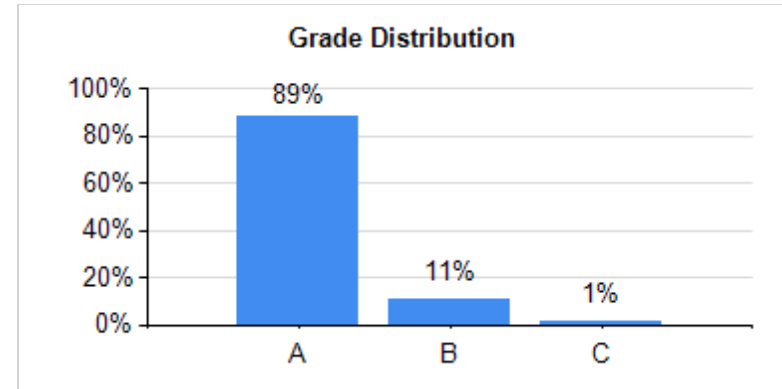
### Date Range for Course by Course Measures

<b>From:</b>	<b>To:</b>
10/27/2014	10/10/2016

### DH120: Local Anesthesia-Lab (1 Units)

Course Learning Outcome Statements	# Students Assessed	# Assessments Delivered	% Mastery Rate	# Assessed with Rubric	# Assessed nonRubric
CLO-DH120-1: Assess the individual patient's need for local anesthesia/analgesia and determine appropriate agents and techniques to safely establish patient comfort	78	102	100%	102	0
CLO-DH120-2: Prevent, recognize and manage medical emergencies related to local anesthesia administration	78	102	100%	102	0

Course Code	# Times Taught	# Students	% Attending > =85%	Course Completion
DH120	9	143	100%	100%



Dental Hygiene Course by Course Review

Date Range for Course by Course Measures

From:	To:
10/27/2014	10/10/2016

**DH120: Local Anesthesia-Lab (1 Units)**

**DH120 Student Response to Course Survey Questions**

Question Text	Strongly Agree	Agree	Disagree	Question Rating**
Course assignments and activities are helping me learn the Student Learning Outcomes (SLOs).	11	7	0	3.61
Course assignments and activities are helping me achieve the Student Learning Outcomes (SLOs).	22	14	0	3.61
Course content is relevant to my lifelong learning or to my career.	24	12	0	3.67
Course policies and expectations are clear on the syllabus.	13	5	0	3.72
Course policies and expectations are outlined on the syllabus.	26	10	0	3.72
Course resources are adequate and available for my learning needs. (e.g. computers, textbooks, equipment, supplies, and tools.)	18	16	2	3.44
Question Text	Excellent	Good	Question Rating**	
Overall rating for this course.	24	12	2.67	

Question Text	Very High – I’ve learned all of them	High – I’ve learned most of them	Question Rating**
My level of mastery of the Student Learning Outcomes (SLOs) in this course is:	14	22	3.39

Question Text	Just right	Question Rating**
The amount of content/material presented in this course is:	36	2.00

Question Text	Yes	Question Rating**
I approached this course responsibly to maximize my learning. (e.g. I attended class every day, completed assignments on time, participated in class, adhered to classroom expectations, was in dress code, treated instructor and students with respect, etc.)	36	2.00

**GOAL**

**Question Rating: >=3.0**

\*Questions Rated on a 4 Point Likert Scale (4 = Strongly Agree to 1 = Strongly Disagree)

\*\*Questions Rated on a 4 Point Likert Scale (4 = Excellent to 1 = Poor)

## Dental Hygiene Course by Course Review

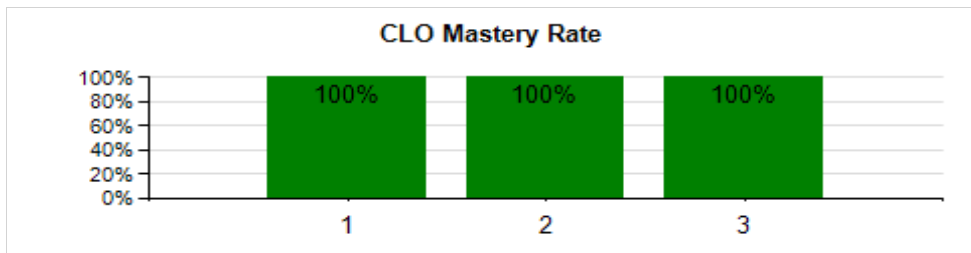
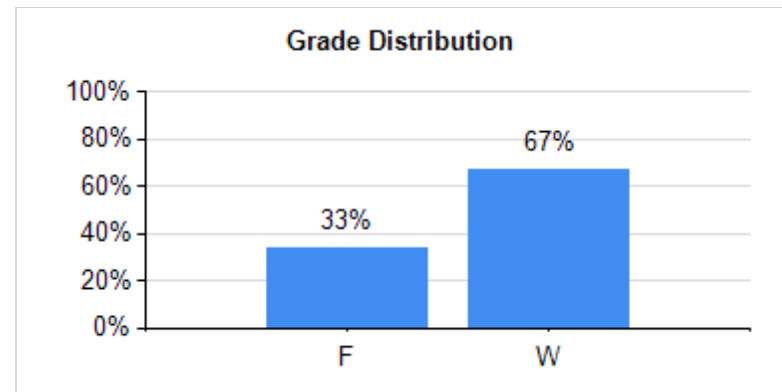
### Date Range for Course by Course Measures

<b>From:</b>	<b>To:</b>
10/27/2014	10/10/2016

### DH134: Clinical Practice 2 (4 Units)

Course Learning Outcome Statements	# Students Assessed	# Assessments Delivered	% Mastery Rate	# Assessed with Rubric	# Assessed nonRubric
CLO-DH134-1: Establish a dental hygiene care plan that reflects the realistic goals and treatment strategies to facilitate optimal oral health through identification and analysis of each patient's physical and oral health assessment	89	89	100%	89	0
CLO-DH134-2: Provide patient-centered treatment and evidence-based care in a manner minimizing risk and optimizing oral health at the beginner to competent level	89	89	100%	89	0
CLO-DH134-3: Record all documentation relevant to patient care and evaluate outcomes at the beginner to competent level	89	89	100%	89	0

Course Code	# Times Taught	# Students	% Attending > =85%	Course Completion
DH134	9	134	100%	98%



Dental Hygiene Course by Course Review

Date Range for Course by Course Measures

From:	To:
10/27/2014	10/10/2016

**DH134: Clinical Practice 2 (4 Units)**

**DH134 Student Response to Course Survey Questions**

Question Text	Strongly Agree	Agree	NKO/NA	Question Rating**
Course assignments and activities are helping me learn the Student Learning Outcomes (SLOs).	17	1	0	3.94
Course assignments and activities are helping me achieve the Student Learning Outcomes (SLOs).	34	2	0	3.94
Course content is relevant to my lifelong learning or to my career.	32	2	0	3.94
Course policies and expectations are clear on the syllabus.	16	2	0	3.89
Course policies and expectations are outlined on the syllabus.	32	4	0	3.89
Course resources are adequate and available for my learning needs. (e.g. computers, textbooks, equipment, supplies, and tools.)	32	2	2	3.72
Question Text	Excellent	Good	Question Rating**	
Overall rating for this course.	34	2	2.94	

Question Text	Very High – I’ve learned all of them	High – I’ve learned most of them	Question Rating**
My level of mastery of the Student Learning Outcomes (SLOs) in this course is:	20	16	3.56

Question Text	Just right	Question Rating**
The amount of content/material presented in this course is:	36	2.00

Question Text	Yes	Question Rating**
I approached this course responsibly to maximize my learning. (e.g. I attended class every day, completed assignments on time, participated in class, adhered to classroom expectations, was in dress code, treated instructor and students with respect, etc.)	36	2.00

**GOAL**

Question Rating: **>=3.0**

\*Questions Rated on a 4 Point Likert Scale (4 = Strongly Agree to 1 = Strongly Disagree)

\*\*Questions Rated on a 4 Point Likert Scale (4 = Excellent to 1 = Poor)

## Dental Hygiene Course by Course Review

### Date Range for Course by Course Measures

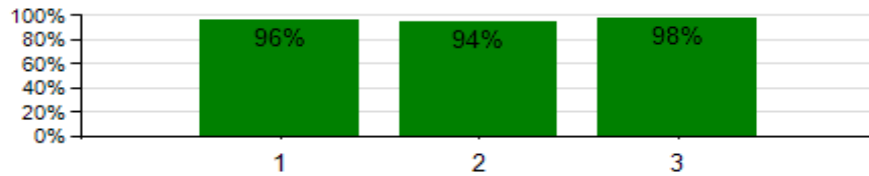
<b>From:</b>	<b>To:</b>
10/27/2014	10/10/2016

### DH30: Periodontics (3 Units)

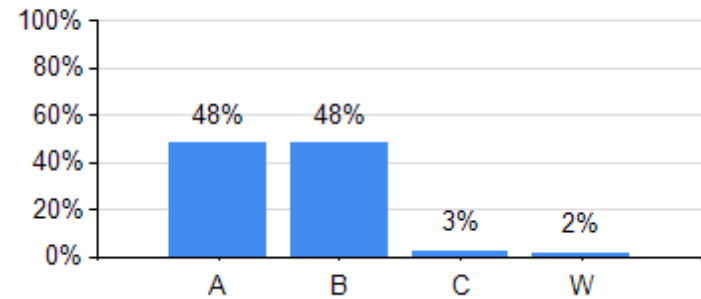
Course Learning Outcome Statements	# Students Assessed	# Assessments Delivered	% Mastery Rate	# Assessed with Rubric	# Assessed nonRubric
CLO-DH30-1: Identify the normal periodontium and recognize deviations from normal	83	83	96%	0	83
CLO-DH30-2: Identify the etiology and describe the progression of periodontal diseases	83	83	94%	0	83
CLO-DH30-3: Determine appropriate periodontal treatment and preventive measures to obtain optimal oral health at the beginner level	83	83	98%	0	83

Course Code	# Times Taught	# Students	% Attending > =85%	Course Completion
DH30	9	133	100%	98%

**CLO Mastery Rate**



**Grade Distribution**



**Dental Hygiene Course by Course Review**

**Date Range for Course by Course Measures**

<b>From:</b>	<b>To:</b>
10/27/2014	10/10/2016

**DH30: Periodontics (3 Units)**

**DH30 Student Response to Course Survey Questions**

Question Text	Strongly Agree	Agree	Disagree	Question Rating**	
Course assignments and activities are helping me learn the Student Learning Outcomes (SLOs).	28	15	2	3.58	
Course assignments and activities are helping me achieve the Student Learning Outcomes (SLOs).	56	30	4	3.58	
Course content is relevant to my lifelong learning or to my career.	68	22	0	3.76	
Course policies and expectations are clear on the syllabus.	33	12	0	3.73	
Course policies and expectations are outlined on the syllabus.	66	24	0	3.73	
Course resources are adequate and available for my learning needs. (e.g. computers, textbooks, equipment, supplies, and tools.)	58	32	0	3.64	
Question Text	Excellent	Good	Fair	Poor	Question Rating**
Overall rating for this course.	54	30	4	2	2.51

Question Text	Very High – I've learned all of them	High – I've learned most of them	Medium – I've learned some of them	Question Rating**
My level of mastery of the Student Learning Outcomes (SLOs) in this course is:	32	52	6	3.29

Question Text	Too much	Just right	Too little	Question Rating**
The amount of content/material presented in this course is:	6	78	6	2.00

Question Text	Yes	Somewhat	Question Rating**
I approached this course responsibly to maximize my learning. (e.g. I attended class every day, completed assignments on time, participated in class, adhered to classroom expectations, was in dress code, treated instructor and students with respect, etc.)	82	6	1.93

**GOAL**

**Question Rating: >=3.0**

\*Questions Rated on a 4 Point Likert Scale (4 = Strongly Agree to 1 = Strongly Disagree)

\*\*Questions Rated on a 4 Point Likert Scale (4 = Excellent to 1 = Poor)



## Dental Hygiene Course by Course Review

### Date Range for Course by Course Measures

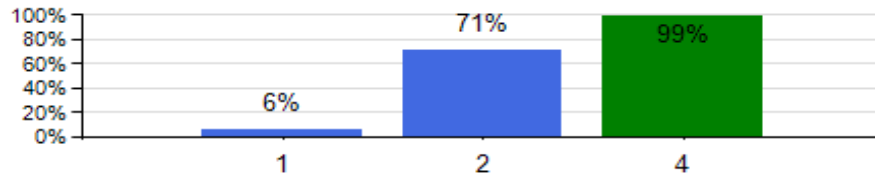
From:	To:
10/27/2014	10/10/2016

### DH46: Legal And Ethical Responsibilities (2 Units)

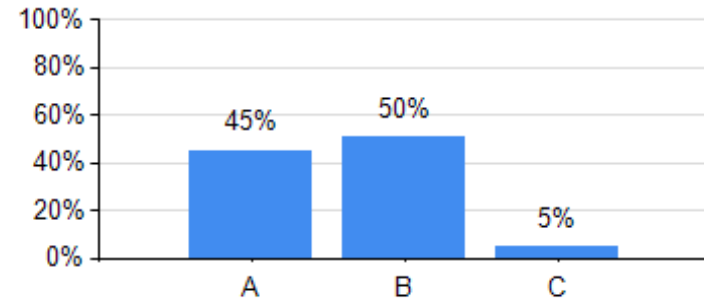
Course Learning Outcome Statements	# Students Assessed	# Assessments Delivered	% Mastery Rate	# Assessed with Rubric	# Assessed nonRubric
CLO-DH46-1: Use recommended guidelines and laws to make responsible and ethical decisions in the practice of dental hygiene	16	16	6%	0	16
CLO-DH46-2: Determine the established laws and current duties defining the scope of dental hygiene practice	76	76	71%	0	76
CLO-DH46-4: Adhere to the role of HIPAA compliance in the dental practice	127	138	99%	0	138

Course Code	# Times Taught	# Students	% Attending > =85%	Course Completion
DH46	9	127	99%	100%

**CLO Mastery Rate**



**Grade Distribution**



**Dental Hygiene Course by Course Review**

**Date Range for Course by Course Measures**

<b>From:</b>	<b>To:</b>
10/27/2014	10/10/2016

**DH46: Legal And Ethical Responsibilities (2 Units)**

**DH46 Student Response to Course Survey Questions**

Question Text	Strongly Agree	Agree	Disagree	Question Rating**
Course assignments and activities are helping me learn the Student Learning Outcomes (SLOs).	13	7	1	3.57
Course assignments and activities are helping me achieve the Student Learning Outcomes (SLOs).	26	14	2	3.57
Course content is relevant to my lifelong learning or to my career.	34	8	0	3.81
Course policies and expectations are clear on the syllabus.	16	5	0	3.76
Course policies and expectations are outlined on the syllabus.	32	10	0	3.76
Course resources are adequate and available for my learning needs. (e.g. computers, textbooks, equipment, supplies, and tools.)	24	18	0	3.57
Question Text	Excellent	Good	Fair	Question Rating**
Overall rating for this course.	24	16	2	2.52

Question Text	Very High – I've learned all of them	High – I've learned most of them	Medium – I've learned some of them	Question Rating**
My level of mastery of the Student Learning Outcomes (SLOs) in this course is:	6	32	4	3.05

Question Text	Too much	Just right	Too little	Question Rating**
The amount of content/material presented in this course is:	8	32	2	2.14

Question Text	Yes	Somewhat	Question Rating**
I approached this course responsibly to maximize my learning. (e.g. I attended class every day, completed assignments on time, participated in class, adhered to classroom expectations, was in dress code, treated instructor and students with respect, etc.)	40	2	1.95

**GOAL**

**Question Rating: >=3.0**

\*Questions Rated on a 4 Point Likert Scale (4 = Strongly Agree to 1 = Strongly Disagree)

\*\*Questions Rated on a 4 Point Likert Scale (4 = Excellent to 1 = Poor)

## Dental Hygiene Course by Course Review

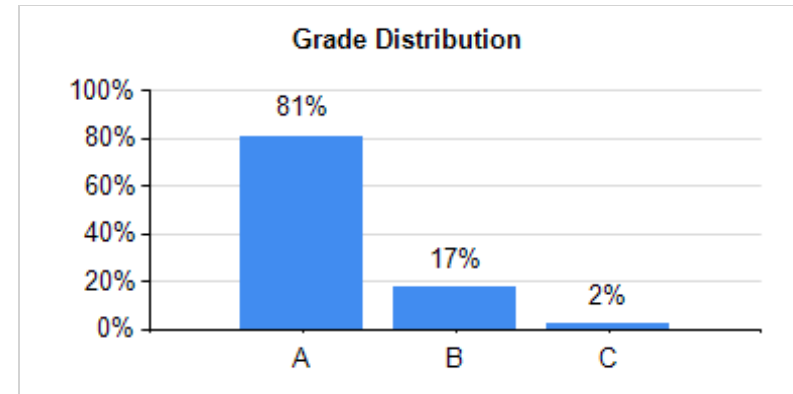
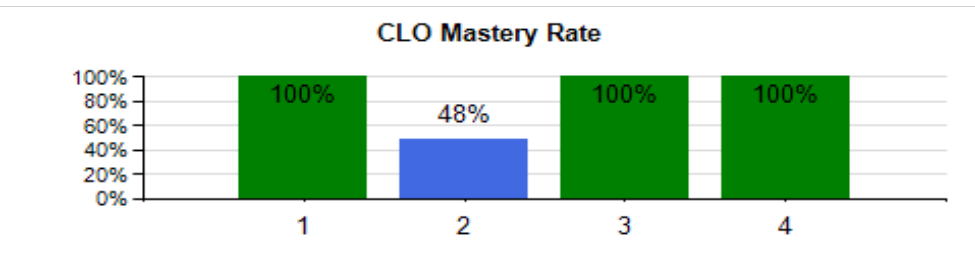
### Date Range for Course by Course Measures

From:	To:
10/27/2014	10/10/2016

### DH499: Dental Hygiene Review (1 Units)

Course Learning Outcome Statements	# Students Assessed	# Assessments Delivered	% Mastery Rate	# Assessed with Rubric	# Assessed nonRubric
CLO-DH499-1: Apply concepts learned about the importance of goal setting, motivation and time management in preparation for taking National Board Dental Hygiene Examination	74	74	100%	74	0
CLO-DH499-2: Have taken the National Board Dental Hygiene Examination	48	48	48%	48	0
CLO-DH499-3: Be able to utilize professional development strategies to seek employment in the field of dental hygiene	70	70	100%	70	0
CLO-DH499-4: Be prepared for dental hygiene regional or state board clinical examinations	74	74	100%	74	0

Course Code	# Times Taught	# Students	% Attending > =85%	Course Completion
DH499	9	127	99%	100%



**Dental Hygiene Course by Course Review**

**Date Range for Course by Course Measures**

<b>From:</b>	<b>To:</b>
10/27/2014	10/10/2016

**DH499: Dental Hygiene Review (1 Units)**

**DH499 Student Response to Course Survey Questions**

Question Text	Strongly Agree	Agree	Question Rating**
Course assignments and activities are helping me learn the Student Learning Outcomes (SLOs).	11	4	3.73
Course assignments and activities are helping me achieve the Student Learning Outcomes (SLOs).	22	8	3.73
Course content is relevant to my lifelong learning or to my career.	24	6	3.80
Course policies and expectations are clear on the syllabus.	12	3	3.80
Course policies and expectations are outlined on the syllabus.	24	6	3.80
Course resources are adequate and available for my learning needs. (e.g. computers, textbooks, equipment, supplies, and tools.)	22	8	3.73
Question Text	Excellent	Good	Question Rating**
Overall rating for this course.	24	6	2.80

Question Text	Very High – I’ve learned all of them	High – I’ve learned most of them	Question Rating**
My level of mastery of the Student Learning Outcomes (SLOs) in this course is:	12	18	3.40

Question Text	Just right	Question Rating**
The amount of content/material presented in this course is:	30	2.00

Question Text	Yes	Question Rating**
I approached this course responsibly to maximize my learning. (e.g. I attended class every day, completed assignments on time, participated in class, adhered to classroom expectations, was in dress code, treated instructor and students with respect, etc.)	30	2.00

**GOAL**

**Question Rating: >=3.0**

\*Questions Rated on a 4 Point Likert Scale (4 = Strongly Agree to 1 = Strongly Disagree)

\*\*Questions Rated on a 4 Point Likert Scale (4 = Excellent to 1 = Poor)

## Dental Hygiene Course by Course Review

### Date Range for Course by Course Measures

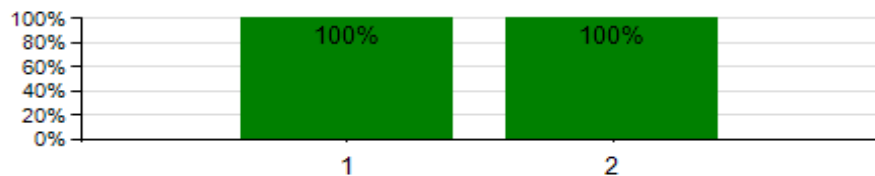
<b>From:</b>	<b>To:</b>
10/27/2014	10/10/2016

### DH132: Dental Materials Lab (1 Units)

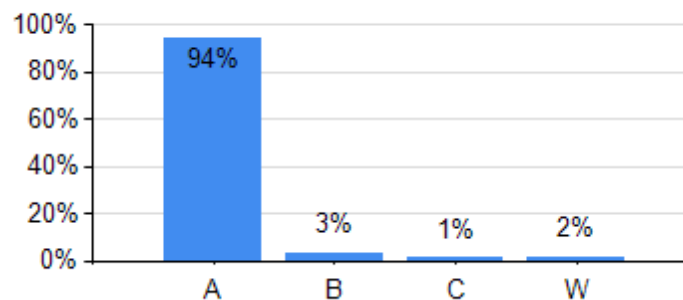
Course Learning Outcome Statements	# Students Assessed	# Assessments Delivered	% Mastery Rate	# Assessed with Rubric	# Assessed nonRubric
CLO-DH132-1: Demonstrate procedures involving materials commonly used in dentistry	94	94	100%	94	0
CLO-DH132-2: Demonstrate adjunctive tests to support recommended dental therapy	94	94	100%	94	0

Course Code	# Times Taught	# Students	% Attending > =85%	Course Completion
DH132	9	133	100%	98%

**CLO Mastery Rate**



**Grade Distribution**



**Dental Hygiene Course by Course Review**

**Date Range for Course by Course Measures**

<b>From:</b>	<b>To:</b>
10/27/2014	10/10/2016

**DH132: Dental Materials Lab (1 Units)**

**DH132 Student Response to Course Survey Questions**

Question Text	Strongly Agree	Agree	Disagree	Strongly Disagree	Question Rating**
Course assignments and activities are helping me learn the Student Learning Outcomes (SLOs).	33	6	0	1	3.78
Course assignments and activities are helping me achieve the Student Learning Outcomes (SLOs).	66	12	0	2	3.78
Course content is relevant to my lifelong learning or to my career.	64	12	4	0	3.75
Course policies and expectations are clear on the syllabus.	36	4	0	0	3.90
Course policies and expectations are outlined on the syllabus.	72	8	0	0	3.90
Course resources are adequate and available for my learning needs. (e.g. computers, textbooks, equipment, supplies, and tools.)	64	14	0	2	3.75
Question Text	Excellent	Good	Question Rating**		
Overall rating for this course.	68	12	2.85		

Question Text	Very High – I've learned all of them	High – I've learned most of them	Medium – I've learned some of them	Question Rating**
My level of mastery of the Student Learning Outcomes (SLOs) in this course is:	30	48	2	3.35

Question Text	Too much	Just right	Question Rating**
The amount of content/material presented in this course is:	4	76	2.05

Question Text	Yes	Somewhat	Question Rating**
I approached this course responsibly to maximize my learning. (e.g. I attended class every day, completed assignments on time, participated in class, adhered to classroom expectations, was in dress code, treated instructor and students with respect, etc.)	78	2	1.98

**GOAL**

**Question Rating: >=3.0**

\*Questions Rated on a 4 Point Likert Scale (4 = Strongly Agree to 1 = Strongly Disagree)

\*\*Questions Rated on a 4 Point Likert Scale (4 = Excellent to 1 = Poor)

## Dental Hygiene Course by Course Review

### Date Range for Course by Course Measures

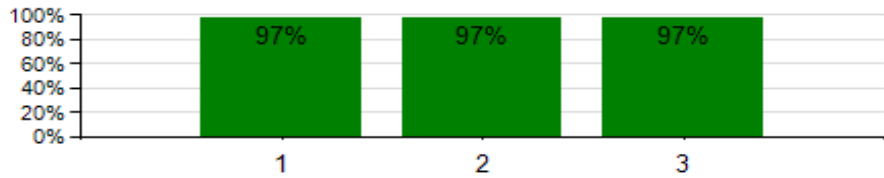
<b>From:</b>	<b>To:</b>
10/27/2014	10/10/2016

### DH143: Clinical Practice 3 (5 Units)

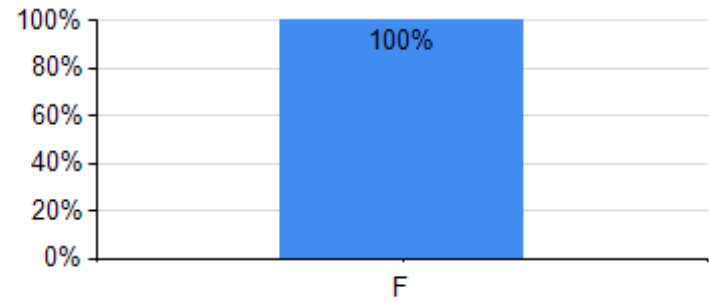
Course Learning Outcome Statements	# Students Assessed	# Assessments Delivered	% Mastery Rate	# Assessed with Rubric	# Assessed nonRubric
CLO-DH143-1: Establish a dental hygiene care plan that reflects the realistic goals and treatment strategies to facilitate optimal oral health through identification and analysis of each patient's physical and oral health assessment	98	271	97%	271	0
CLO-DH143-2: Provide patient-centered treatment and evidence-based care in a manner minimizing risk and optimizing oral health at the competent level	98	358	97%	358	0
CLO-DH143-3: Record all documentation relevant to patient care and evaluate outcomes at the competent level	98	358	97%	358	0

Course Code	# Times Taught	# Students	% Attending > =85%	Course Completion
DH143	10	128	100%	99%

**CLO Mastery Rate**



**Grade Distribution**



**Dental Hygiene Course by Course Review**

Date Range for Course by Course Measures	
<b>From:</b>	<b>To:</b>
10/27/2014	10/10/2016

**DH143: Clinical Practice 3 (5 Units)**

**DH143 Student Response to Course Survey Questions**

Question Text	Strongly Agree	Agree	Disagree	Question Rating**
Course assignments and activities are helping me learn the Student Learning Outcomes (SLOs).	22	5	0	3.81
Course assignments and activities are helping me achieve the Student Learning Outcomes (SLOs).	44	10	0	3.81
Course content is relevant to my lifelong learning or to my career.	46	8	0	3.85
Course policies and expectations are clear on the syllabus.	23	4	1	3.79
Course policies and expectations are outlined on the syllabus.	46	8	2	3.79
Course resources are adequate and available for my learning needs. (e.g. computers, textbooks, equipment, supplies, and tools.)	44	8	2	3.78
Question Text	Excellent	Good	Fair	Question Rating**
Overall rating for this course.	48	4	2	2.85

Question Text	Very High – I've learned all of them	High – I've learned most of them	Medium – I've learned some of them	Question Rating**
My level of mastery of the Student Learning Outcomes (SLOs) in this course is:	40	12	2	3.70

Question Text	Too much	Just right	Question Rating**
The amount of content/material presented in this course is:	6	48	2.11

Question Text	Yes	Somewhat	Question Rating**
I approached this course responsibly to maximize my learning. (e.g. I attended class every day, completed assignments on time, participated in class, adhered to classroom expectations, was in dress code, treated instructor and students with respect, etc.)	52	2	1.96

**GOAL**

**Question Rating: >=3.0**

\*Questions Rated on a 4 Point Likert Scale (4 = Strongly Agree to 1 = Strongly Disagree)

\*\*Questions Rated on a 4 Point Likert Scale (4 = Excellent to 1 = Poor)



## Dental Hygiene Course by Course Review

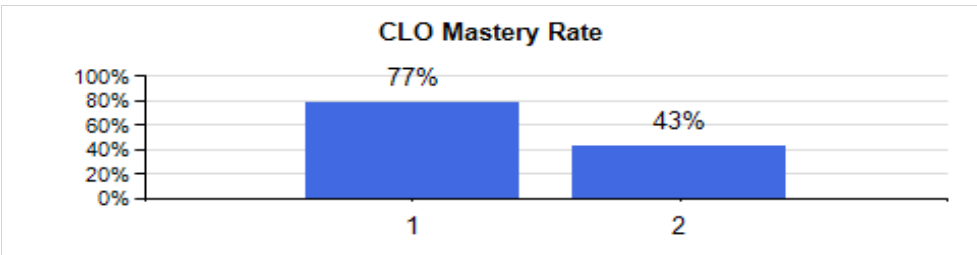
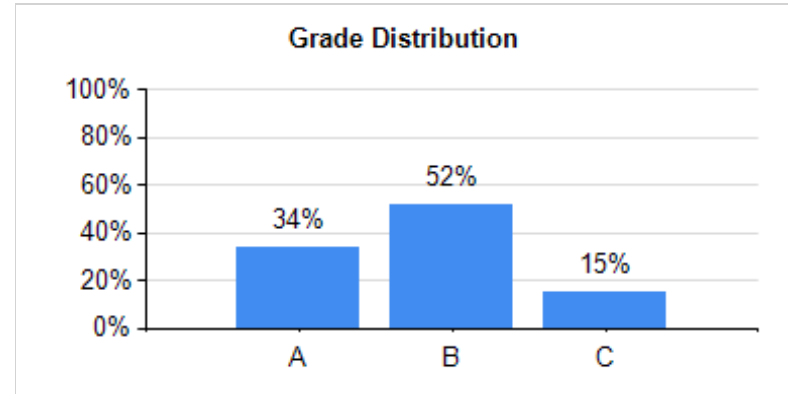
### Date Range for Course by Course Measures

From:	To:
10/27/2014	10/10/2016

### DH21: General And Oral Patholog (4 Units)

Course Learning Outcome Statements	# Students Assessed	# Assessments Delivered	% Mastery Rate	# Assessed with Rubric	# Assessed nonRubric
CLO-DH21-1: Recognize and document abnormal oral or health-related conditions that warrant attention of the dentist for conditions that preclude or alter dental hygiene care	75	75	77%	0	75
CLO-DH21-2: Discuss the etiology of abnormal conditions and body responses with the dentist and patient	75	75	43%	0	75

Course Code	# Times Taught	# Students	% Attending > =85%	Course Completion
DH21	9	143	100%	100%



**Dental Hygiene Course by Course Review**

Date Range for Course by Course Measures	
From:	To:
10/27/2014	10/10/2016

**DH21: General And Oral Patholog (4 Units)**

**DH21 Student Response to Course Survey Questions**

Question Text	Strongly Agree	Agree	Disagree	Strongly Disagree	NKO/NA	Question Rating**
Course assignments and activities are helping me learn the Student Learning Outcomes (SLOs).	54	20	0	0	1	3.68
Course assignments and activities are helping me achieve the Student Learning Outcomes (SLOs).	108	40	0	0	2	3.68
Course content is relevant to my lifelong learning or to my career.	120	30	0	0	0	3.80
Course policies and expectations are clear on the syllabus.	69	9	0	0	0	3.88
Course policies and expectations are outlined on the syllabus.	138	18	0	0	0	3.88
Course resources are adequate and available for my learning needs. (e.g. computers, textbooks, equipment, supplies, and tools.)	116	28	2	2	2	3.69
Question Text	Excellent	Good	Fair	Question Rating**		
Overall rating for this course.	118	30	2	2.77		

Question Text	Very High – I’ve learned all of them	High – I’ve learned most of them	Medium – I’ve learned some of them	Question Rating**
My level of mastery of the Student Learning Outcomes (SLOs) in this course is:	44	92	14	3.20

Question Text	Too much	Just right	Question Rating**
The amount of content/material presented in this course is:	40	110	2.27

Question Text	Yes	Somewhat	Question Rating**
I approached this course responsibly to maximize my learning. (e.g. I attended class every day, completed assignments on time, participated in class, adhered to classroom expectations, was in dress code, treated instructor and students with respect, etc.)	144	6	1.96

**GOAL**

Question Rating: **>=3.0**

\*Questions Rated on a 4 Point Likert Scale (4 = Strongly Agree to 1 = Strongly Disagree)

\*\*Questions Rated on a 4 Point Likert Scale (4 = Excellent to 1 = Poor)

## Dental Hygiene Course by Course Review

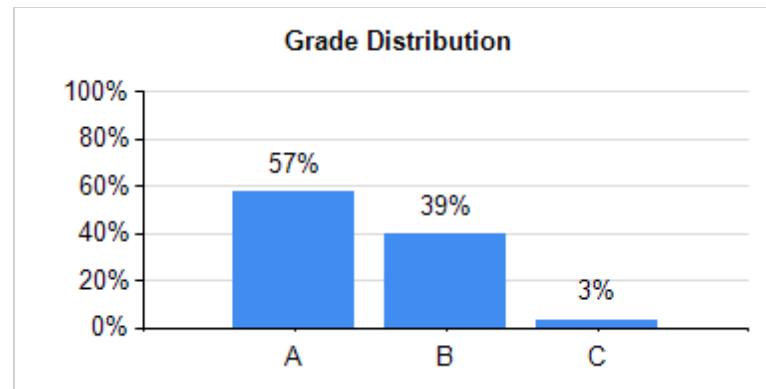
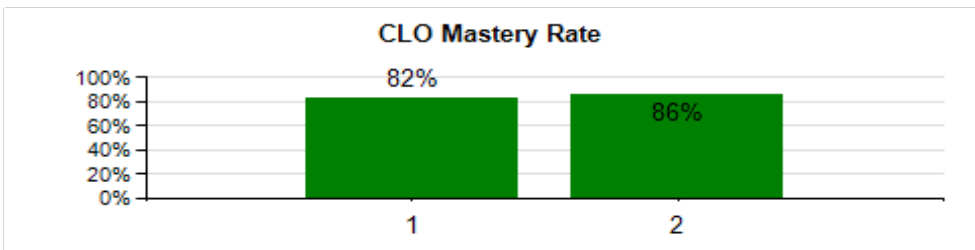
### Date Range for Course by Course Measures

<b>From:</b>	<b>To:</b>
10/27/2014	10/10/2016

### DH24: Clinic Seminar 1 (1 Units)

Course Learning Outcome Statements	# Students Assessed	# Assessments Delivered	% Mastery Rate	# Assessed with Rubric	# Assessed nonRubric
CLO-DH24-1: Utilize knowledge of fundamental concepts of instrumentation to more advanced periodontal treatment through the introduction of specialty and adjunct instruments	17	17	82%	0	17
CLO-DH24-2: Recognize and state the appropriate management of medical emergencies that may arise in the dental office setting	36	36	86%	0	36

Course Code	# Times Taught	# Students	% Attending > =85%	Course Completion
DH24	9	143	99%	100%



**Dental Hygiene Course by Course Review**

**Date Range for Course by Course Measures**

<b>From:</b>	<b>To:</b>
10/27/2014	10/10/2016

**DH24: Clinic Seminar 1 (1 Units)**

**DH24 Student Response to Course Survey Questions**

Question Text	Strongly Agree	Agree	Question Rating**	
Course assignments and activities are helping me learn the Student Learning Outcomes (SLOs).	29	12	3.71	
Course assignments and activities are helping me achieve the Student Learning Outcomes (SLOs).	58	24	3.71	
Course content is relevant to my lifelong learning or to my career.	66	16	3.80	
Course policies and expectations are clear on the syllabus.	31	10	3.76	
Course policies and expectations are outlined on the syllabus.	62	20	3.76	
Course resources are adequate and available for my learning needs. (e.g. computers, textbooks, equipment, supplies, and tools.)	58	24	3.71	
Question Text	Excellent	Good	Fair	Question Rating**
Overall rating for this course.	62	18	2	2.73

Question Text	Very High – I've learned all of them	High – I've learned most of them	Medium – I've learned some of them	Question Rating**
My level of mastery of the Student Learning Outcomes (SLOs) in this course is:	42	38	2	3.49

Question Text	Too much	Just right	Too little	Question Rating**
The amount of content/material presented in this course is:	2	78	2	2.00

Question Text	Yes	Somewhat	Question Rating**
I approached this course responsibly to maximize my learning. (e.g. I attended class every day, completed assignments on time, participated in class, adhered to classroom expectations, was in dress code, treated instructor and students with respect, etc.)	78	2	1.98

**GOAL**

**Question Rating: >=3.0**

\*Questions Rated on a 4 Point Likert Scale (4 = Strongly Agree to 1 = Strongly Disagree)

\*\*Questions Rated on a 4 Point Likert Scale (4 = Excellent to 1 = Poor)

## Dental Hygiene Course by Course Review

### Date Range for Course by Course Measures

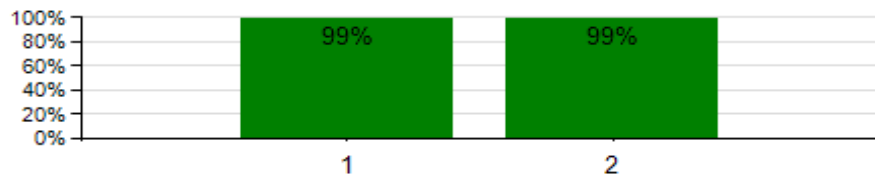
<b>From:</b>	<b>To:</b>
10/27/2014	10/10/2016

### DH32: Dental Materials Lecture (2 Units)

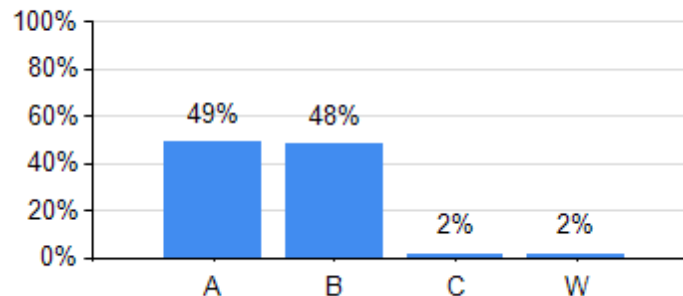
Course Learning Outcome Statements	# Students Assessed	# Assessments Delivered	% Mastery Rate	# Assessed with Rubric	# Assessed nonRubric
CLO-DH32-1: Recognize materials commonly used in dental restorative procedures and the influence on the dentition and periodontium	83	83	99%	0	83
CLO-DH32-2: Support recommended restorative materials and procedures through patient education derived from evidence based research	83	83	99%	0	83

Course Code	# Times Taught	# Students	% Attending > =85%	Course Completion
DH32	9	133	100%	98%

**CLO Mastery Rate**



**Grade Distribution**



**Dental Hygiene Course by Course Review**

**Date Range for Course by Course Measures**

<b>From:</b>	<b>To:</b>
10/27/2014	10/10/2016

**DH32: Dental Materials Lecture (2 Units)**

**DH32 Student Response to Course Survey Questions**

Question Text	Strongly Agree	Agree	Disagree	NKO/NA	Question Rating**
Course assignments and activities are helping me learn the Student Learning Outcomes (SLOs).	43	5	0	1	3.82
Course assignments and activities are helping me achieve the Student Learning Outcomes (SLOs).	86	10	0	2	3.82
Course content is relevant to my lifelong learning or to my career.	80	12	4	0	3.79
Course policies and expectations are clear on the syllabus.	44	5	0	0	3.90
Course policies and expectations are outlined on the syllabus.	88	10	0	0	3.90
Course resources are adequate and available for my learning needs. (e.g. computers, textbooks, equipment, supplies, and tools.)	80	16	2	0	3.80

Question Text	Excellent	Good	Question Rating**
Overall rating for this course.	80	18	2.82

Question Text	Very High – I've learned all of them	High – I've learned most of them	Medium – I've learned some of them	Question Rating**
My level of mastery of the Student Learning Outcomes (SLOs) in this course is:	32	54	12	3.20

Question Text	Too much	Just right	Question Rating**
The amount of content/material presented in this course is:	14	84	2.14

Question Text	Yes	Somewhat	Question Rating**
I approached this course responsibly to maximize my learning. (e.g. I attended class every day, completed assignments on time, participated in class, adhered to classroom expectations, was in dress code, treated instructor and students with respect, etc.)	92	6	1.94

**GOAL**

**Question Rating: >=3.0**

\*Questions Rated on a 4 Point Likert Scale (4 = Strongly Agree to 1 = Strongly Disagree)

\*\*Questions Rated on a 4 Point Likert Scale (4 = Excellent to 1 = Poor)

## Dental Hygiene Course by Course Review

### Date Range for Course by Course Measures

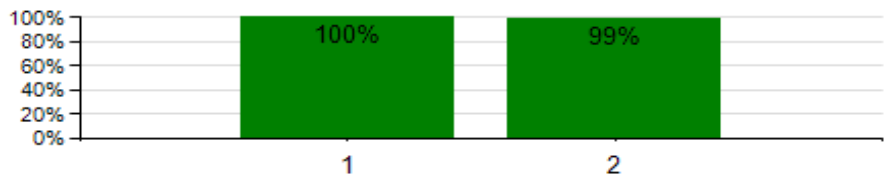
<b>From:</b>	<b>To:</b>
10/27/2014	10/10/2016

### DH399: Dental Hygiene Review (0 Units)

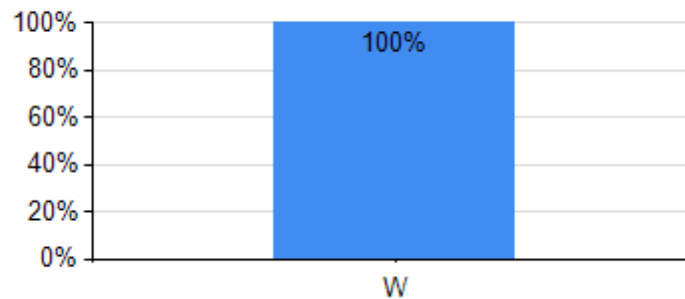
Course Learning Outcome Statements	# Students Assessed	# Assessments Delivered	% Mastery Rate	# Assessed with Rubric	# Assessed nonRubric
CLO-DH399-1: Apply concepts learned about the importance of goal setting, motivation and time management in preparation for taking National Board Dental Hygiene Examination	101	101	100%	0	101
CLO-DH399-2: Recognize areas of weakness in previous course materials to establish an effective study plan	101	101	99%	0	101

Course Code	# Times Taught	# Students	% Attending > =85%	Course Completion
DH399	9	133	98%	98%

**CLO Mastery Rate**



**Grade Distribution**



**Dental Hygiene Course by Course Review**

**Date Range for Course by Course Measures**

<b>From:</b>	<b>To:</b>
10/27/2014	10/10/2016

**DH399: Dental Hygiene Review (0 Units)**

**DH399 Student Response to Course Survey Questions**

Question Text	Strongly Agree	Agree	Question Rating**
Course assignments and activities are helping me learn the Student Learning Outcomes (SLOs).	14	2	3.88
Course assignments and activities are helping me achieve the Student Learning Outcomes (SLOs).	28	4	3.88
Course content is relevant to my lifelong learning or to my career.	24	8	3.75
Course policies and expectations are clear on the syllabus.	13	3	3.81
Course policies and expectations are outlined on the syllabus.	26	6	3.81
Course resources are adequate and available for my learning needs. (e.g. computers, textbooks, equipment, supplies, and tools.)	24	8	3.75
Question Text	Excellent	Good	Question Rating**
Overall rating for this course.	26	6	2.81

Question Text	Very High – I've learned all of them	High – I've learned most of them	Medium – I've learned some of them	Question Rating**
My level of mastery of the Student Learning Outcomes (SLOs) in this course is:	14	14	2	3.40

Question Text	Too much	Just right	Question Rating**
The amount of content/material presented in this course is:	2	30	2.06

Question Text	Yes	Somewhat	Question Rating**
I approached this course responsibly to maximize my learning. (e.g. I attended class every day, completed assignments on time, participated in class, adhered to classroom expectations, was in dress code, treated instructor and students with respect, etc.)	26	4	1.87

**GOAL**

**Question Rating: >=3.0**

\*Questions Rated on a 4 Point Likert Scale (4 = Strongly Agree to 1 = Strongly Disagree)

\*\*Questions Rated on a 4 Point Likert Scale (4 = Excellent to 1 = Poor)



## Dental Hygiene Course by Course Review

### Date Range for Course by Course Measures

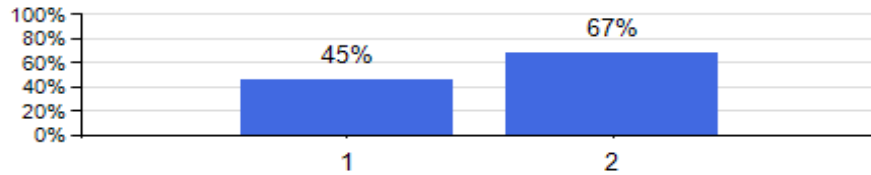
<b>From:</b>	<b>To:</b>
10/27/2014	10/10/2016

### DH12: Head And Neck Anatomy (3 Units)

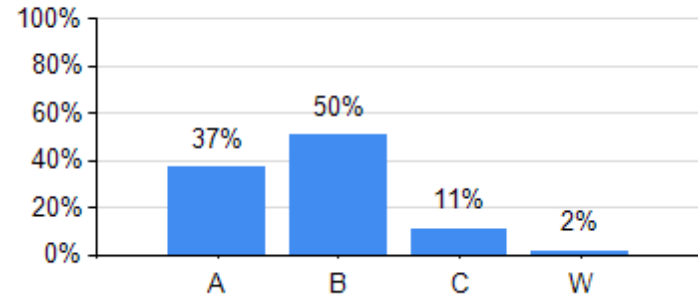
Course Learning Outcome Statements	# Students Assessed	# Assessments Delivered	% Mastery Rate	# Assessed with Rubric	# Assessed nonRubric
CLO-DH12-1:Identify the anatomical structures of the head and neck region and describe their function in relation to the clinical practice of dental hygiene	95	95	45%	0	95
CLO-DH12-2:Discuss the embryology and osteology of the orofacial structures	95	95	67%	0	95

Course Code	# Times Taught	# Students	% Attending > =85%	Course Completion
DH12	9	141	100%	99%

**CLO Mastery Rate**



**Grade Distribution**



**Dental Hygiene Course by Course Review**

**Date Range for Course by Course Measures**

<b>From:</b>	<b>To:</b>
10/27/2014	10/10/2016

**DH12: Head And Neck Anatomy (3 Units)**

**DH12 Student Response to Course Survey Questions**

Question Text	Strongly Agree	Agree	Disagree	Strongly Disagree	Question Rating**
Course assignments and activities are helping me learn the Student Learning Outcomes (SLOs).	62	13	1	0	3.80
Course assignments and activities are helping me achieve the Student Learning Outcomes (SLOs).	124	26	2	0	3.80
Course content is relevant to my lifelong learning or to my career.	124	24	4	0	3.79
Course policies and expectations are clear on the syllabus.	68	8	0	0	3.89
Course policies and expectations are outlined on the syllabus.	136	16	0	0	3.89
Course resources are adequate and available for my learning needs. (e.g. computers, textbooks, equipment, supplies, and tools.)	122	24	4	2	3.75
Question Text	Excellent	Good	Fair	Poor	Question Rating**
Overall rating for this course.	122	22	6	2	2.74

Question Text	Very High – I’ve learned all of them	High – I’ve learned most of them	Medium – I’ve learned some of them	Low – I’ve learned none of them	I wasn’t aware of the SLOs in the course	Question Rating**
My level of mastery of the Student Learning Outcomes (SLOs) in this course is:	42	90	14	2	2	3.12

Question Text	Too much	Just right	Question Rating**
The amount of content/material presented in this course is:	50	102	2.33

Question Text	Yes	Somewhat	Question Rating**
I approached this course responsibly to maximize my learning. (e.g. I attended class every day, completed assignments on time, participated in class, adhered to classroom expectations, was in dress code, treated instructor and students with respect, etc.)	150	2	1.99

**GOAL**

**Question Rating: >=3.0**

\*Questions Rated on a 4 Point Likert Scale (4 = Strongly Agree to 1 = Strongly Disagree)

\*\*Questions Rated on a 4 Point Likert Scale (4 = Excellent to 1 = Poor)

## Dental Hygiene Course by Course Review

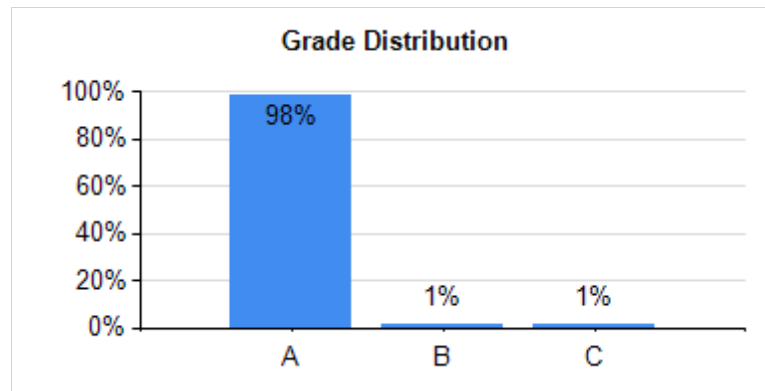
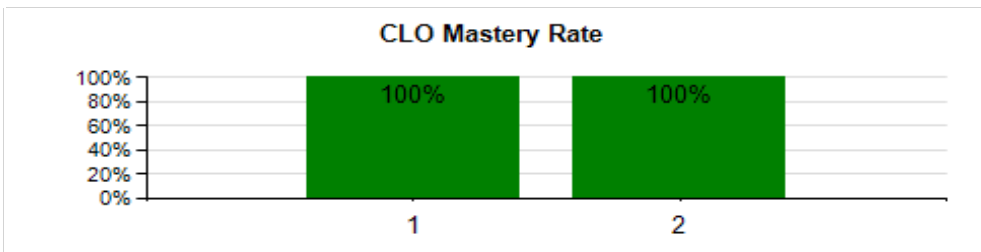
### Date Range for Course by Course Measures

<b>From:</b>	<b>To:</b>
10/27/2014	10/10/2016

### DH124: Clinic Seminar 1 (lab) (1 Units)

Course Learning Outcome Statements	# Students Assessed	# Assessments Delivered	% Mastery Rate	# Assessed with Rubric	# Assessed nonRubric
CLO-DH124-1:Adapt fundamental concepts of instrumentation to more advanced periodontal treatment through the use of specialty and adjunct instruments at the beginner level	16	16	100%	16	0
CLO-DH124-2:Recognize and demonstrate the appropriate management of medical emergencies that may arise in the dental office setting	16	16	100%	16	0

Course Code	# Times Taught	# Students	% Attending > =85%	Course Completion
DH124	9	143	99%	100%



**Dental Hygiene Course by Course Review**

**Date Range for Course by Course Measures**

<b>From:</b>	<b>To:</b>
10/27/2014	10/10/2016

**DH124: Clinic Seminar 1 (lab) (1 Units)**

**DH124 Student Response to Course Survey Questions**

Question Text	Strongly Agree	Agree	Question Rating**
Course assignments and activities are helping me learn the Student Learning Outcomes (SLOs).	9	5	3.64
Course assignments and activities are helping me achieve the Student Learning Outcomes (SLOs).	18	10	3.64
Course content is relevant to my lifelong learning or to my career.	20	8	3.71
Course policies and expectations are clear on the syllabus.	10	4	3.71
Course policies and expectations are outlined on the syllabus.	20	8	3.71
Course resources are adequate and available for my learning needs. (e.g. computers, textbooks, equipment, supplies, and tools.)	22	6	3.79
Question Text	Excellent	Good	Question Rating**
Overall rating for this course.	24	4	2.86

Question Text	Very High – I've learned all of them	High – I've learned most of them	Question Rating**
My level of mastery of the Student Learning Outcomes (SLOs) in this course is:	18	10	3.64

Question Text	Just right	Too little	Question Rating**
The amount of content/material presented in this course is:	26	2	1.93

Question Text	Yes	Question Rating**
I approached this course responsibly to maximize my learning. (e.g. I attended class every day, completed assignments on time, participated in class, adhered to classroom expectations, was in dress code, treated instructor and students with respect, etc.)	28	2.00

**GOAL**

**Question Rating: >=3.0**

\*Questions Rated on a 4 Point Likert Scale (4 = Strongly Agree to 1 = Strongly Disagree)

\*\*Questions Rated on a 4 Point Likert Scale (4 = Excellent to 1 = Poor)

## Dental Hygiene Course by Course Review

### Date Range for Course by Course Measures

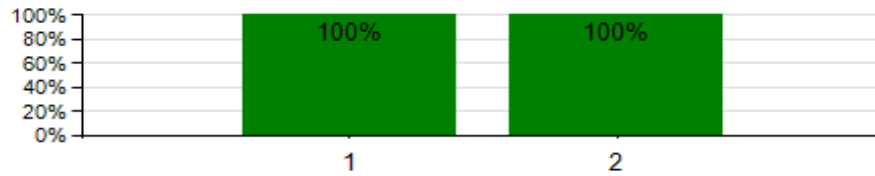
<b>From:</b>	<b>To:</b>
10/27/2014	10/10/2016

### DH110: Oral Biology-Lab (0 Units)

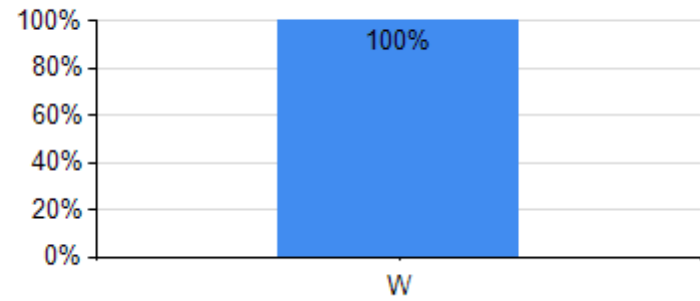
Course Learning Outcome Statements	# Students Assessed	# Assessments Delivered	% Mastery Rate	# Assessed with Rubric	# Assessed nonRubric
CLO-DH110-1: Identify the anatomical characteristics of each deciduous and permanent tooth and its location in the dental arch	66	66	100%	66	0
CLO-DH110-2: Recognize malocclusal and its effects on the dentition	66	66	100%	66	0

Course Code	# Times Taught	# Students	% Attending > =85%	Course Completion
DH110	9	141	100%	99%

**CLO Mastery Rate**



**Grade Distribution**



**Dental Hygiene Course by Course Review**

**Date Range for Course by Course Measures**

<b>From:</b>	<b>To:</b>
10/27/2014	10/10/2016

**DH110: Oral Biology-Lab (0 Units)**

**DH110 Student Response to Course Survey Questions**

Question Text	Strongly Agree	Agree	Question Rating**
Course assignments and activities are helping me learn the Student Learning Outcomes (SLOs).	28	9	3.76
Course assignments and activities are helping me achieve the Student Learning Outcomes (SLOs).	56	18	3.76
Course content is relevant to my lifelong learning or to my career.	60	14	3.81
Course policies and expectations are clear on the syllabus.	33	4	3.89
Course policies and expectations are outlined on the syllabus.	66	8	3.89
Course resources are adequate and available for my learning needs. (e.g. computers, textbooks, equipment, supplies, and tools.)	64	10	3.86
Question Text	Excellent	Good	Question Rating**
Overall rating for this course.	60	10	2.86

Question Text	Very High – I've learned all of them	High – I've learned most of them	Question Rating**
My level of mastery of the Student Learning Outcomes (SLOs) in this course is:	26	48	3.35

Question Text	Too much	Just right	Too little	Question Rating**
The amount of content/material presented in this course is:	6	64	4	2.03

Question Text	Yes	Question Rating**
I approached this course responsibly to maximize my learning. (e.g. I attended class every day, completed assignments on time, participated in class, adhered to classroom expectations, was in dress code, treated instructor and students with respect, etc.)	72	2.00

**GOAL**

**Question Rating: >=3.0**

\*Questions Rated on a 4 Point Likert Scale (4 = Strongly Agree to 1 = Strongly Disagree)

\*\*Questions Rated on a 4 Point Likert Scale (4 = Excellent to 1 = Poor)

**Dental Hygiene Course by Course Review**

**Date Range for Course by Course Measures**

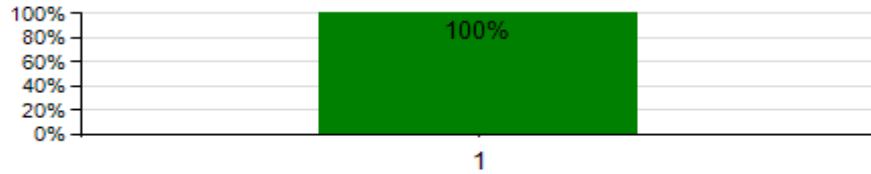
<b>From:</b>	<b>To:</b>
10/27/2014	10/10/2016

**DH112: Head And Neck Anatomy-Lab (0 Units)**

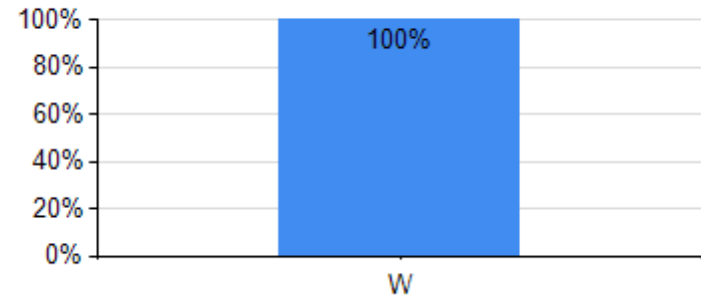
Course Learning Outcome Statements	# Students Assessed	# Assessments Delivered	% Mastery Rate	# Assessed with Rubric	# Assessed nonRubric
CLO-DH112-1: Locate the anatomical structures of the head and neck region and describe their function in relation to the clinical practice of dental hygiene	84	84	100%	84	0

Course Code	# Times Taught	# Students	% Attending > =85%	Course Completion
DH112	9	141	99%	99%

**CLO Mastery Rate**



**Grade Distribution**



**Dental Hygiene Course by Course Review**

**Date Range for Course by Course Measures**

<b>From:</b>	<b>To:</b>
10/27/2014	10/10/2016

**DH112: Head And Neck Anatomy-Lab (0 Units)**

**DH112 Student Response to Course Survey Questions**

Question Text	Strongly Agree	Agree	Disagree	Question Rating**
Course assignments and activities are helping me learn the Student Learning Outcomes (SLOs).	24	10	0	3.71
Course assignments and activities are helping me achieve the Student Learning Outcomes (SLOs).	48	20	0	3.71
Course content is relevant to my lifelong learning or to my career.	46	20	0	3.70
Course policies and expectations are clear on the syllabus.	27	6	0	3.82
Course policies and expectations are outlined on the syllabus.	54	12	0	3.82
Course resources are adequate and available for my learning needs. (e.g. computers, textbooks, equipment, supplies, and tools.)	48	18	2	3.68
Question Text	Excellent	Good	Question Rating**	
Overall rating for this course.	44	22	2.67	

Question Text	Very High – I’ve learned all of them	High – I’ve learned most of them	Medium – I’ve learned some of them	Question Rating**
My level of mastery of the Student Learning Outcomes (SLOs) in this course is:	14	48	6	3.12

Question Text	Too much	Just right	Too little	Question Rating**
The amount of content/material presented in this course is:	20	46	2	2.26

Question Text	Yes	Question Rating**
I approached this course responsibly to maximize my learning. (e.g. I attended class every day, completed assignments on time, participated in class, adhered to classroom expectations, was in dress code, treated instructor and students with respect, etc.)	68	2.00

**GOAL**

**Question Rating: >=3.0**

\*Questions Rated on a 4 Point Likert Scale (4 = Strongly Agree to 1 = Strongly Disagree)

\*\*Questions Rated on a 4 Point Likert Scale (4 = Excellent to 1 = Poor)



**Dental Hygiene Course by Course Review**

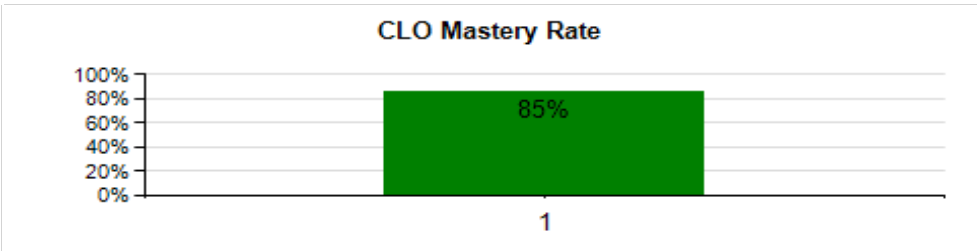
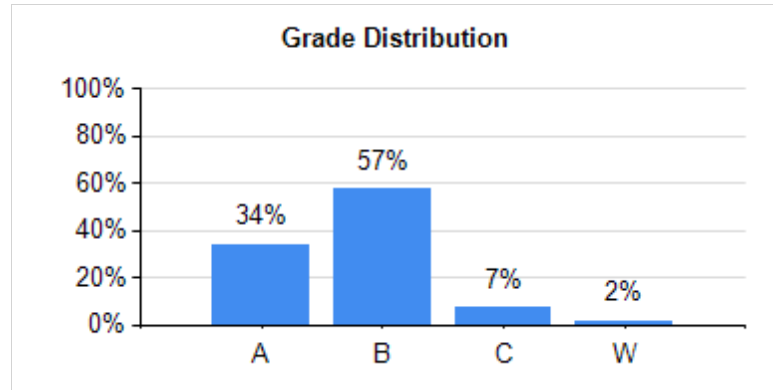
**Date Range for Course by Course Measures**

<b>From:</b>	<b>To:</b>
10/27/2014	10/10/2016

**DH13: Dental Health Education (2 Units)**

Course Learning Outcome Statements	# Students Assessed	# Assessments Delivered	% Mastery Rate	# Assessed with Rubric	# Assessed nonRubric
CLO-DH13-1: Provide individualized oral hygiene instructions through the use of educational materials, physiotherapy aids and the dental hygiene process of care	95	95	85%	0	95

Course Code	# Times Taught	# Students	% Attending > =85%	Course Completion
DH13	9	141	99%	99%



**Dental Hygiene Course by Course Review**

Date Range for Course by Course Measures	
From:	To:
10/27/2014	10/10/2016

**DH13: Dental Health Education (2 Units)**

**DH13 Student Response to Course Survey Questions**

Question Text	Strongly Agree	Agree	Disagree	Question Rating**
Course assignments and activities are helping me learn the Student Learning Outcomes (SLOs).	27	23	1	3.51
Course assignments and activities are helping me achieve the Student Learning Outcomes (SLOs).	54	46	2	3.51
Course content is relevant to my lifelong learning or to my career.	80	22	0	3.78
Course policies and expectations are clear on the syllabus.	42	11	0	3.79
Course policies and expectations are outlined on the syllabus.	84	22	0	3.79
Course resources are adequate and available for my learning needs. (e.g. computers, textbooks, equipment, supplies, and tools.)	72	26	4	3.67
Question Text	Excellent	Good	Fair	Question Rating**
Overall rating for this course.	58	38	6	2.51

Question Text	Very High – I've learned all of them	High – I've learned most of them	Medium – I've learned some of them	Question Rating**
My level of mastery of the Student Learning Outcomes (SLOs) in this course is:	30	66	6	3.24

Question Text	Too much	Just right	Too little	Question Rating**
The amount of content/material presented in this course is:	24	76	2	2.22

Question Text	Yes	Question Rating**
I approached this course responsibly to maximize my learning. (e.g. I attended class every day, completed assignments on time, participated in class, adhered to classroom expectations, was in dress code, treated instructor and students with respect, etc.)	102	2.00

**GOAL**

**Question Rating: >=3.0**

\*Questions Rated on a 4 Point Likert Scale (4 = Strongly Agree to 1 = Strongly Disagree)

\*\*Questions Rated on a 4 Point Likert Scale (4 = Excellent to 1 = Poor)

## Dental Hygiene Course by Course Review

### Date Range for Course by Course Measures

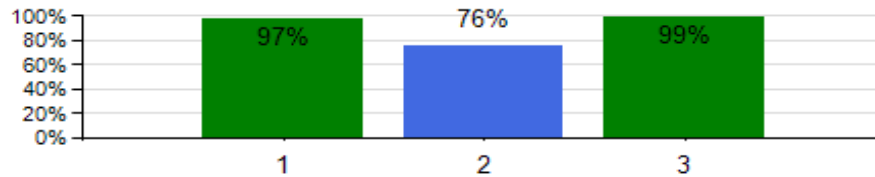
<b>From:</b>	<b>To:</b>
10/27/2014	10/10/2016

### DH14: Introduction To Clinic (2 Units)

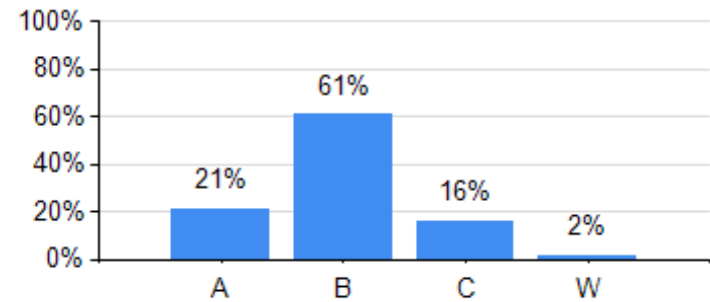
Course Learning Outcome Statements	# Students Assessed	# Assessments Delivered	% Mastery Rate	# Assessed with Rubric	# Assessed nonRubric
CLO-DH14-1: Establish a dental hygiene care plan that reflects the realistic goals and treatment strategies to facilitate optimal oral health through identification and analysis of each patient's physical and oral health assessment	95	95	97%	0	95
CLO-DH14-2: Utilize knowledge to provide a patient-centered treatment and evidence-based care in a manner minimizing risk and optimizing oral health at the novice level	95	95	76%	0	95
CLO-DH14-3: Apply knowledge to record all documentation relevant to patient care at the novice level	95	95	99%	0	95

Course Code	# Times Taught	# Students	% Attending > =85%	Course Completion
DH14	7	118	100%	98%

**CLO Mastery Rate**



**Grade Distribution**



**Dental Hygiene Course by Course Review**

**Date Range for Course by Course Measures**

<b>From:</b>	<b>To:</b>
10/27/2014	10/10/2016

**DH14: Introduction To Clinic (2 Units)**

**DH14 Student Response to Course Survey Questions**

Question Text	Strongly Agree	Agree	NKO/NA	Question Rating**
Course assignments and activities are helping me learn the Student Learning Outcomes (SLOs).	30	11	1	3.64
Course assignments and activities are helping me achieve the Student Learning Outcomes (SLOs).	60	22	2	3.64
Course content is relevant to my lifelong learning or to my career.	76	8	0	3.90
Course policies and expectations are clear on the syllabus.	37	5	0	3.88
Course policies and expectations are outlined on the syllabus.	74	10	0	3.88
Course resources are adequate and available for my learning needs. (e.g. computers, textbooks, equipment, supplies, and tools.)	66	16	2	3.71
Question Text	Excellent	Good	Question Rating**	
Overall rating for this course.	76	8	2.90	

Question Text	Very High – I've learned all of them	High – I've learned most of them	Medium – I've learned some of them	Question Rating**
My level of mastery of the Student Learning Outcomes (SLOs) in this course is:	28	52	4	3.29

Question Text	Too much	Just right	Question Rating**
The amount of content/material presented in this course is:	12	72	2.14

Question Text	Yes	Question Rating**
I approached this course responsibly to maximize my learning. (e.g. I attended class every day, completed assignments on time, participated in class, adhered to classroom expectations, was in dress code, treated instructor and students with respect, etc.)	84	2.00

**GOAL**

**Question Rating: >=3.0**

\*Questions Rated on a 4 Point Likert Scale (4 = Strongly Agree to 1 = Strongly Disagree)

\*\*Questions Rated on a 4 Point Likert Scale (4 = Excellent to 1 = Poor)

## Dental Hygiene Course by Course Review

### Date Range for Course by Course Measures

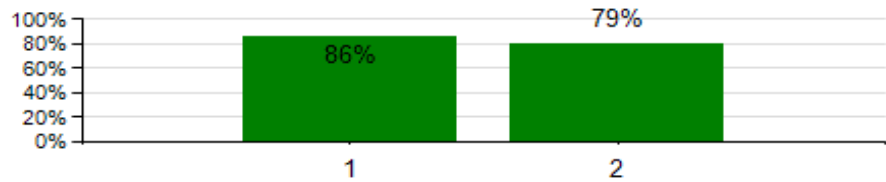
From:	To:
10/27/2014	10/10/2016

### DH20: Local Anesthesia-Lecture (1 Units)

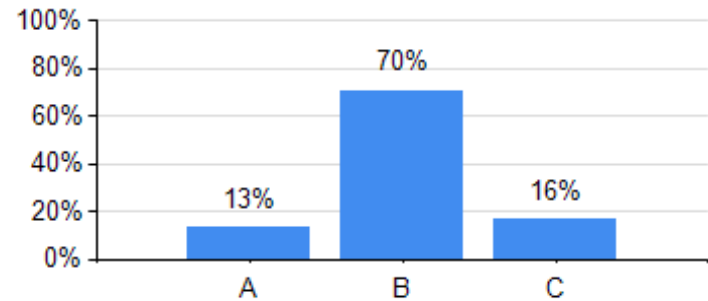
Course Learning Outcome Statements	# Students Assessed	# Assessments Delivered	% Mastery Rate	# Assessed with Rubric	# Assessed nonRubric
CLO-DH20-1: Assess the individual patient's need for local anesthesia/analgesia and determine appropriate agents and techniques to safely establish patient comfort	56	56	86%	0	56
CLO-DH20-2: Prevent, recognize and manage medical emergencies related to local anesthesia administration	91	91	79%	0	91

Course Code	# Times Taught	# Students	% Attending > =85%	Course Completion
DH20	9	143	100%	100%

**CLO Mastery Rate**



**Grade Distribution**



**Dental Hygiene Course by Course Review**

**Date Range for Course by Course Measures**

<b>From:</b>	<b>To:</b>
10/27/2014	10/10/2016

**DH20: Local Anesthesia-Lecture (1 Units)**

**DH20 Student Response to Course Survey Questions**

Question Text	Strongly Agree	Agree	Disagree	Strongly Disagree	Question Rating**
Course assignments and activities are helping me learn the Student Learning Outcomes (SLOs).	32	12	0	0	3.73
Course assignments and activities are helping me achieve the Student Learning Outcomes (SLOs).	64	24	0	0	3.73
Course content is relevant to my lifelong learning or to my career.	72	14	2	0	3.80
Course policies and expectations are clear on the syllabus.	35	9	0	0	3.80
Course policies and expectations are outlined on the syllabus.	70	18	0	0	3.80
Course resources are adequate and available for my learning needs. (e.g. computers, textbooks, equipment, supplies, and tools.)	62	18	6	2	3.59
Question Text	Excellent	Good	Question Rating**		
Overall rating for this course.	64	24	2.73		

Question Text	Very High – I've learned all of them	High – I've learned most of them	Medium – I've learned some of them	Question Rating**
My level of mastery of the Student Learning Outcomes (SLOs) in this course is:	24	60	2	3.26

Question Text	Too much	Just right	Question Rating**
The amount of content/material presented in this course is:	6	82	2.07

Question Text	Yes	Somewhat	Question Rating**
I approached this course responsibly to maximize my learning. (e.g. I attended class every day, completed assignments on time, participated in class, adhered to classroom expectations, was in dress code, treated instructor and students with respect, etc.)	82	4	1.95

**GOAL**

**Question Rating: >=3.0**

\*Questions Rated on a 4 Point Likert Scale (4 = Strongly Agree to 1 = Strongly Disagree)

\*\*Questions Rated on a 4 Point Likert Scale (4 = Excellent to 1 = Poor)

**Dental Hygiene Course by Course Review**

**Date Range for Course by Course Measures**

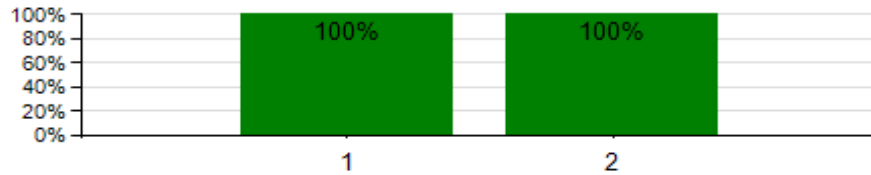
<b>From:</b>	<b>To:</b>
10/27/2014	10/10/2016

**DH45: Nutrition (2 Units)**

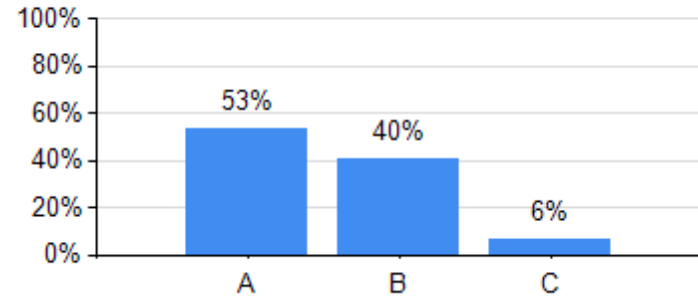
Course Learning Outcome Statements	# Students Assessed	# Assessments Delivered	% Mastery Rate	# Assessed with Rubric	# Assessed nonRubric
CLO-DH45-1:Recognize and describe nutritional deficiencies related to oral health	46	46	100%	46	0
CLO-DH45-2:Evaluate the nutritional status of the patient and provide individualized education on the relationship of nutrition and dental health	46	46	100%	46	0

Course Code	# Times Taught	# Students	% Attending > =85%	Course Completion
DH45	9	127	99%	100%

**CLO Mastery Rate**



**Grade Distribution**



**Dental Hygiene Course by Course Review**

**Date Range for Course by Course Measures**

<b>From:</b>	<b>To:</b>
10/27/2014	10/10/2016

**DH45: Nutrition (2 Units)**

**DH45 Student Response to Course Survey Questions**

Question Text	Strongly Agree	Agree	Disagree	Strongly Disagree	NKO/NA	Question Rating**
Course assignments and activities are helping me learn the Student Learning Outcomes (SLOs).	17	14	0	3	1	3.23
Course assignments and activities are helping me achieve the Student Learning Outcomes (SLOs).	34	28	0	6	2	3.23
Course content is relevant to my lifelong learning or to my career.	32	32	6	0	0	3.37
Course policies and expectations are clear on the syllabus.	20	15	0	0	0	3.57
Course policies and expectations are outlined on the syllabus.	40	30	0	0	0	3.57
Course resources are adequate and available for my learning needs. (e.g. computers, textbooks, equipment, supplies, and tools.)	32	28	2	4	2	3.24
Question Text	Excellent	Good	Fair	Poor		Question Rating**
Overall rating for this course.	28	26	12	4		2.11

Question Text	Very High – I've learned all of them	High – I've learned most of them	Medium – I've learned some of them	Question Rating**
My level of mastery of the Student Learning Outcomes (SLOs) in this course is:	8	38	24	2.77

Question Text	Too much	Just right	Too little	Question Rating**
The amount of content/material presented in this course is:	20	42	8	2.17

Question Text	Yes	Somewhat	Question Rating**
I approached this course responsibly to maximize my learning. (e.g. I attended class every day, completed assignments on time, participated in class, adhered to classroom expectations, was in dress code, treated instructor and students with respect, etc.)	66	4	1.94

**GOAL**

**Question Rating: >=3.0**

\*Questions Rated on a 4 Point Likert Scale (4 = Strongly Agree to 1 = Strongly Disagree)

\*\*Questions Rated on a 4 Point Likert Scale (4 = Excellent to 1 = Poor)